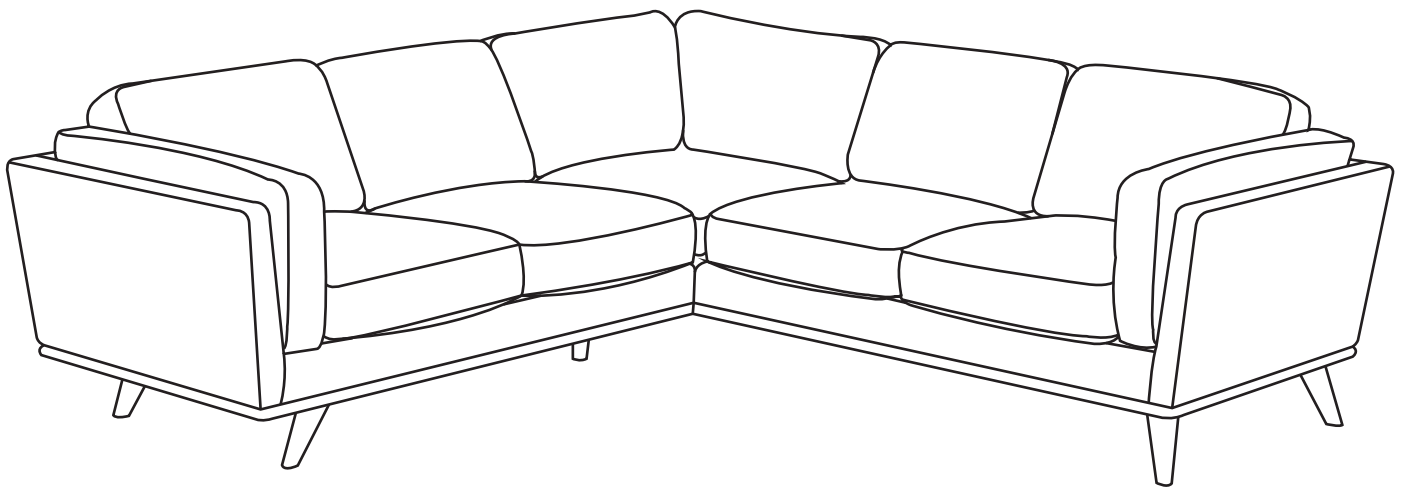


# ARTICLE.

VERSION 1.2

## Assembly Instructions



# TIMBER

## Corner Sectional Sofa

WW - 789 LAL + RASC

ASSEMBLY INSTRUCTIONS

Read these instructions carefully and keep for future reference. Refer to parts inventory for guidance, and ensure you have all pieces before starting.

When assembling, place all parts on a soft, clean, and flat surface such as a carpet to prevent scratches.

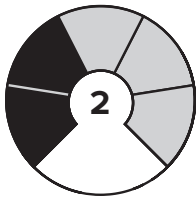
If you’re having difficulty, our friendly Customer Care team is always here to help. Call us at **1.888.746.3455** during business hours, email **service@article.com** or chat live at **article.com**.



TIME

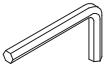










# OF PEOPLE



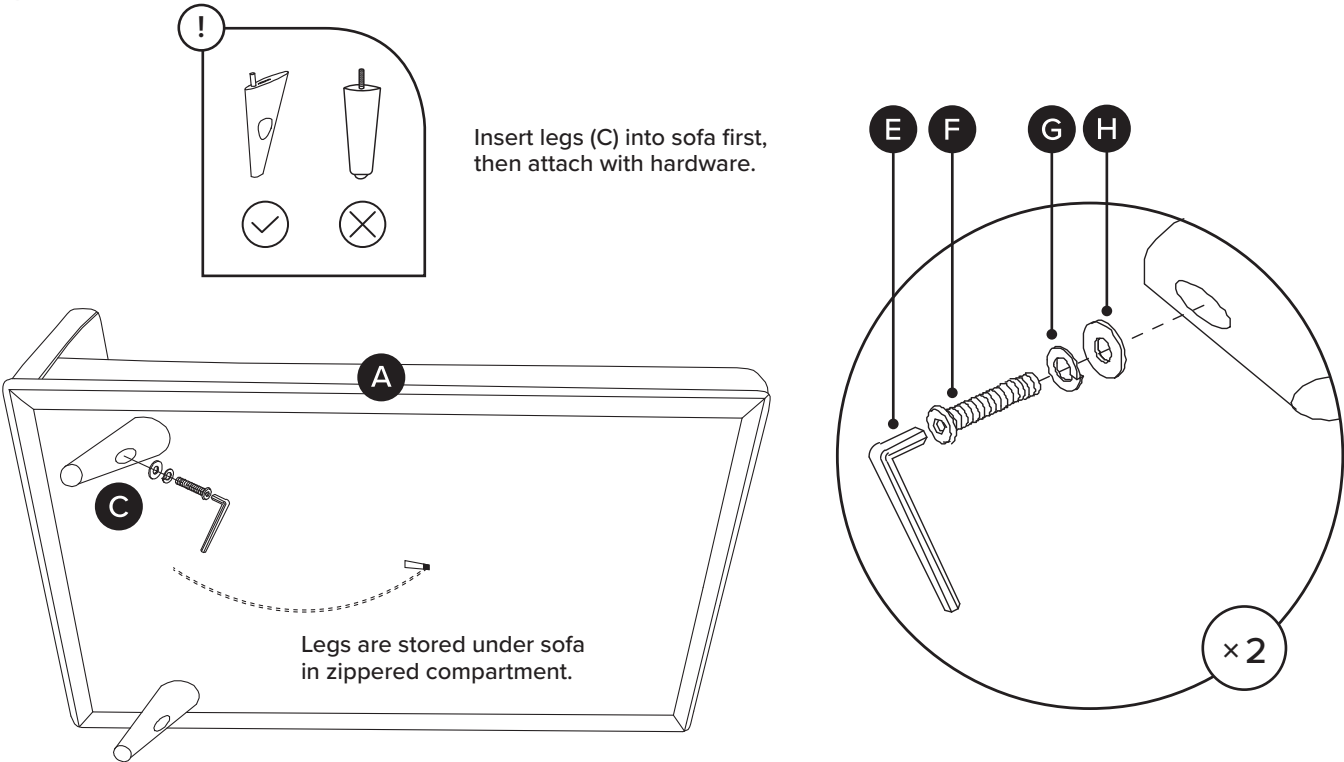
DIFFICULTY

! Hardware may loosen over time, check the bolts regularly and tighten if necessary.

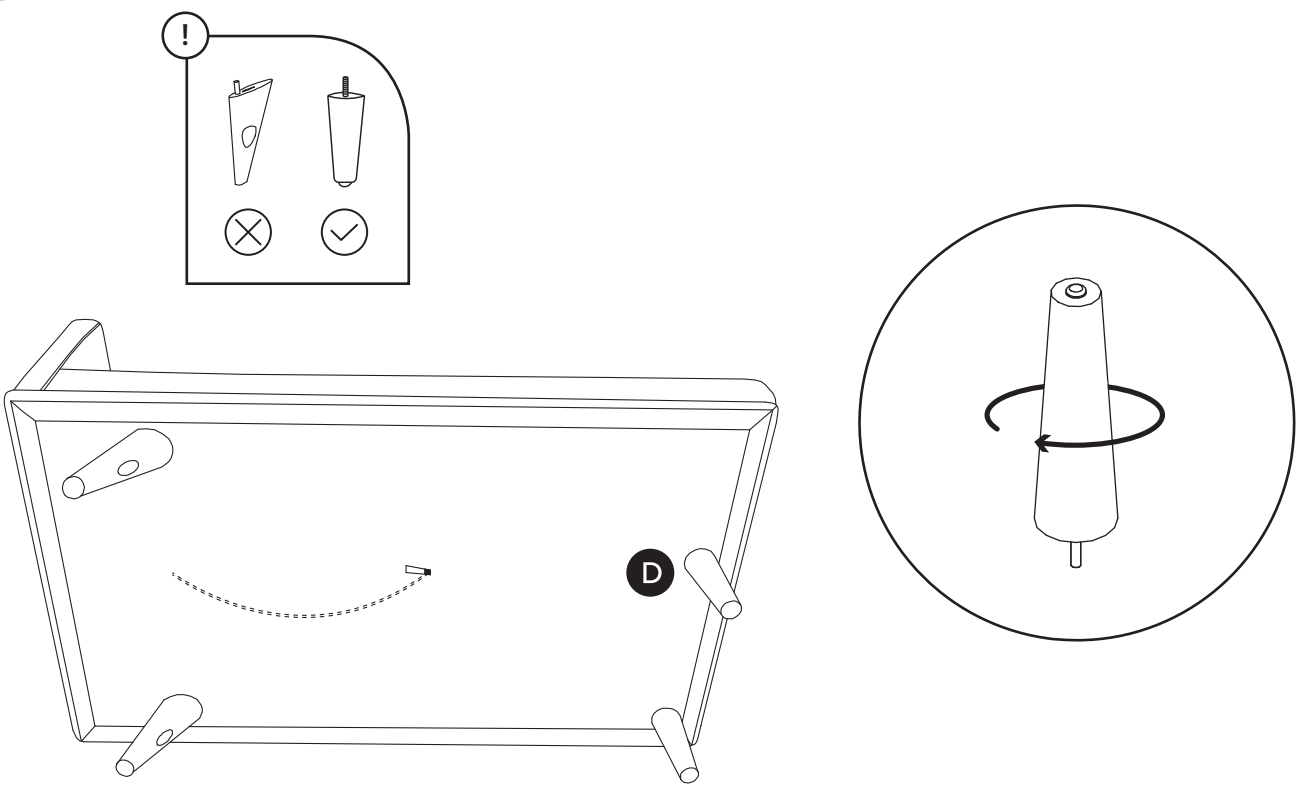
PARTS INVENTORY		
ID	DESCRIPTION	QTY
A	LEFT SOFA SECTION	1
B	RIGHT SOFA SECTION	1
C	CORNER LEGS	4
D	INSIDE LEGS	4
E	ALLEN KEY 	1
F	M10 × 60MM BOLT 	4
G	LOCK WASHER 	4
H	WASHER 	4

PARTS INVENTORY CONT.		
ID	DESCRIPTION	QTY
I	CORNER SEAT CUSHION 	1
J	ARM CUSHION 	2
K	SEAT CUSHION 	4
L	CORNER BACK CUSHION 	2
M	BACK CUSHION 	4

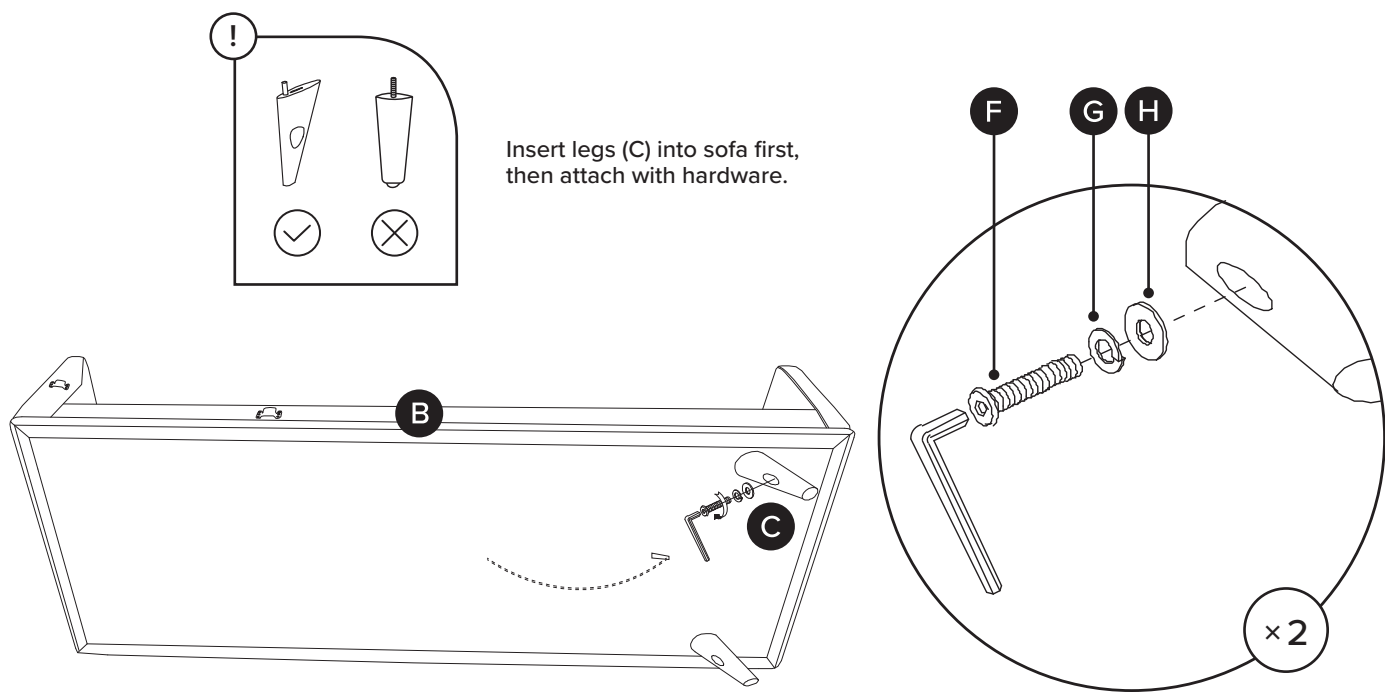
1A



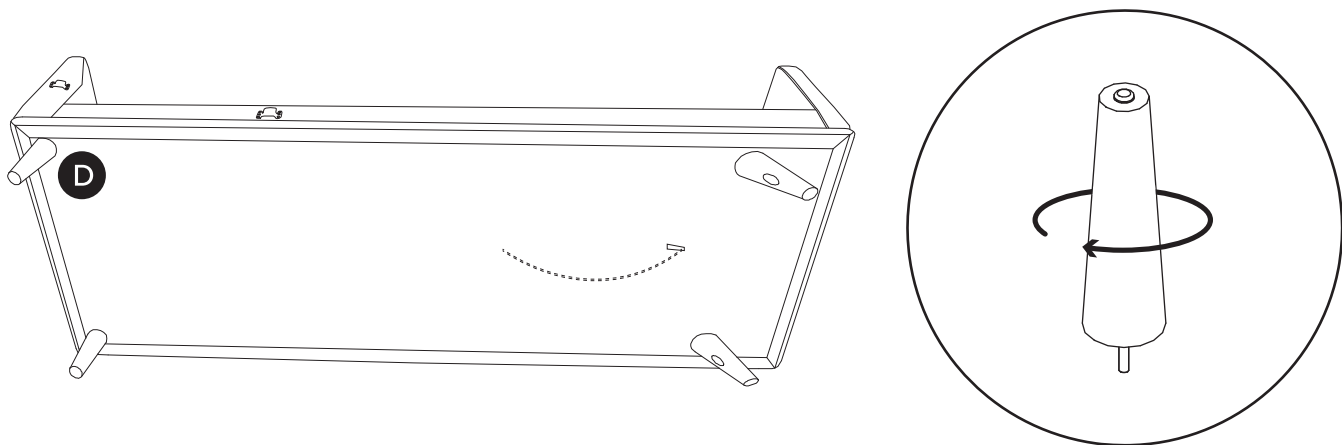
1B

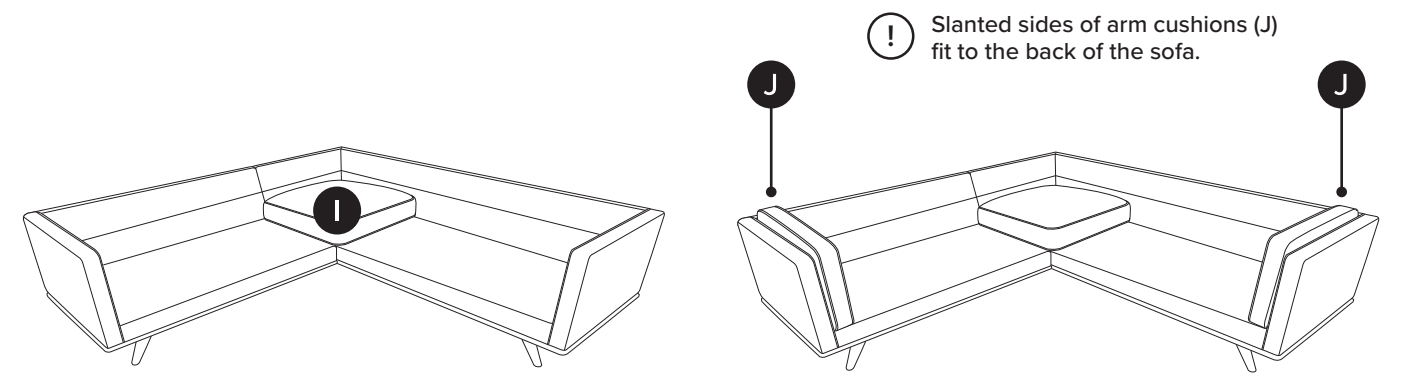
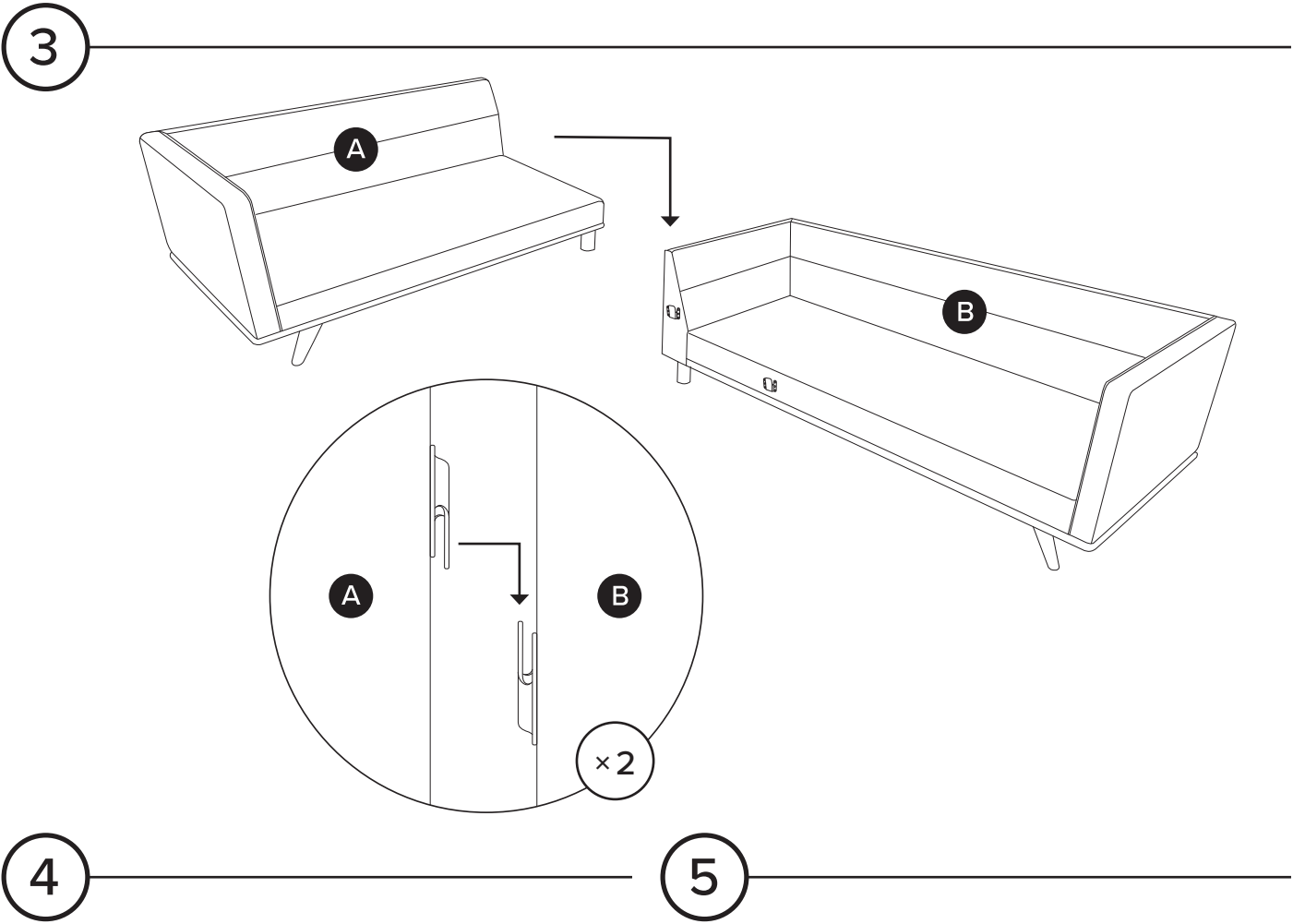


2A



2B

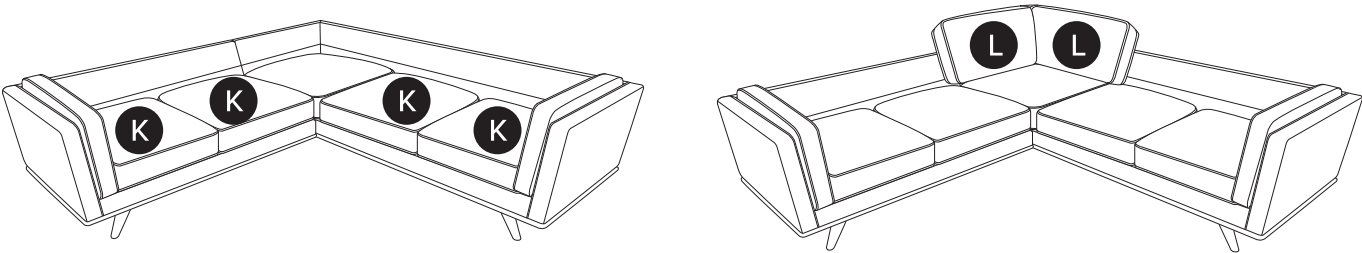




6

7

! Slanted sides of corner back cushions (L) fit together in the corner of the sectional.



8

