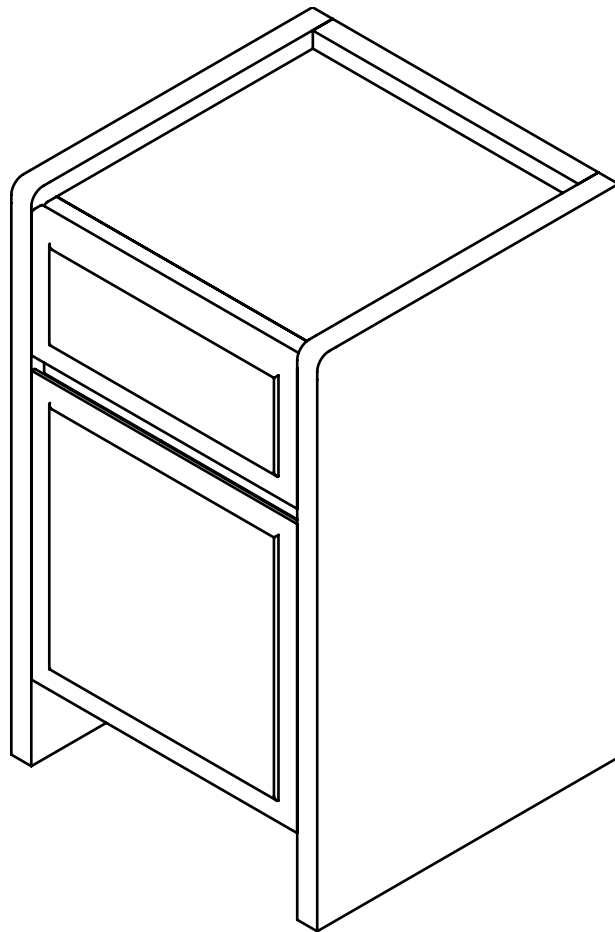


ARTICLE.

VERSION 1.0

Assembly Instructions



DECA

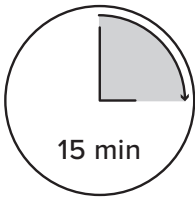
Cabinet

ASSEMBLY INSTRUCTIONS

Read these instructions carefully and keep for future reference. Refer to parts inventory for guidance, and ensure you have all pieces before starting.

When assembling, place all parts on a soft, clean, and flat surface such as a carpet to prevent scratches.

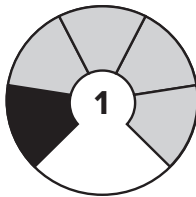
If you’re having difficulty, our friendly Customer Care team is always here to help. Call us at **1.888.746.3455** during business hours, email **service@article.com** or chat live at **article.com**.



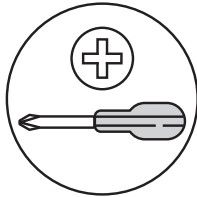
TIME





OF PEOPLE



DIFFICULTY

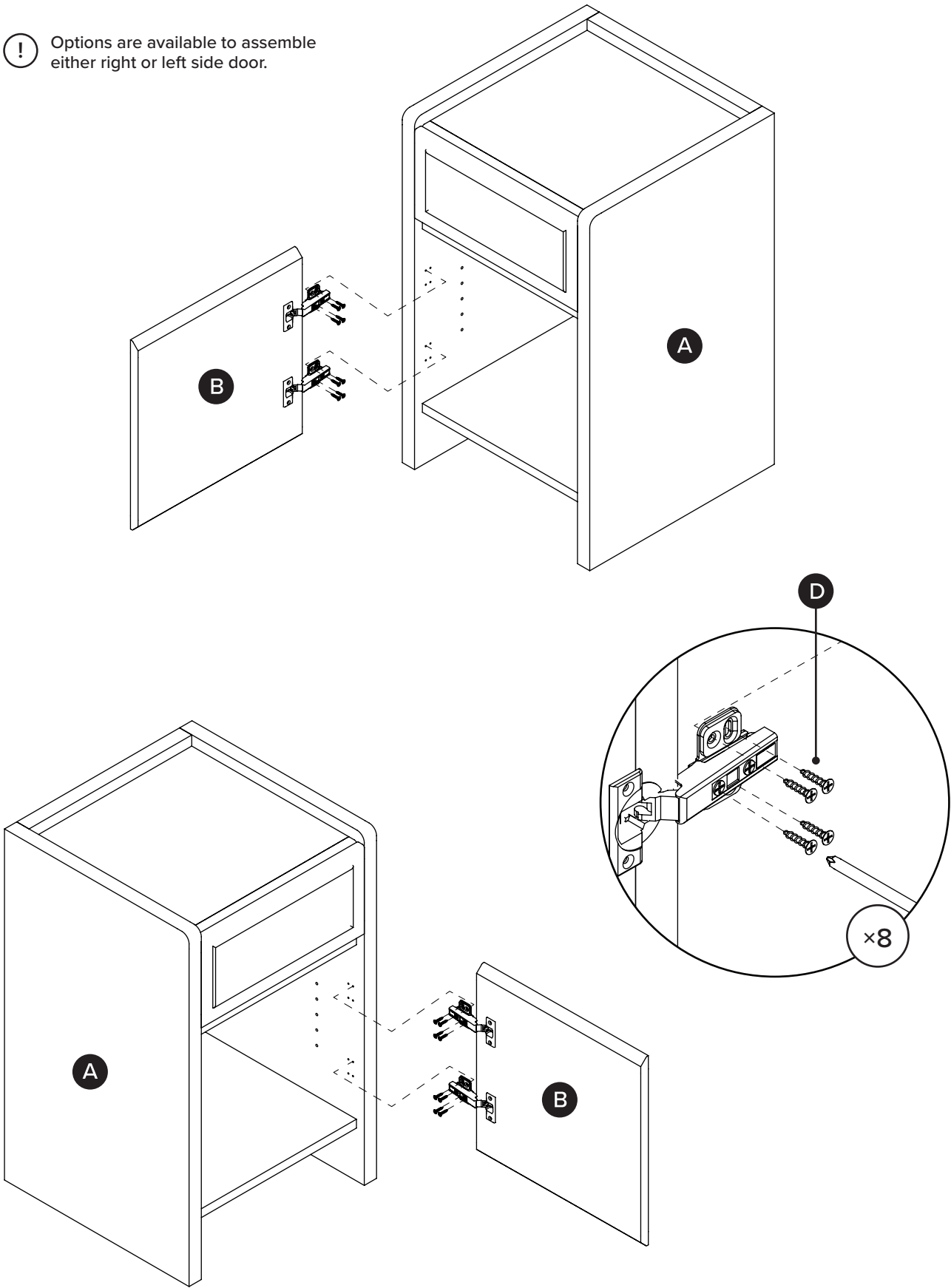


REQUIRED TOOL

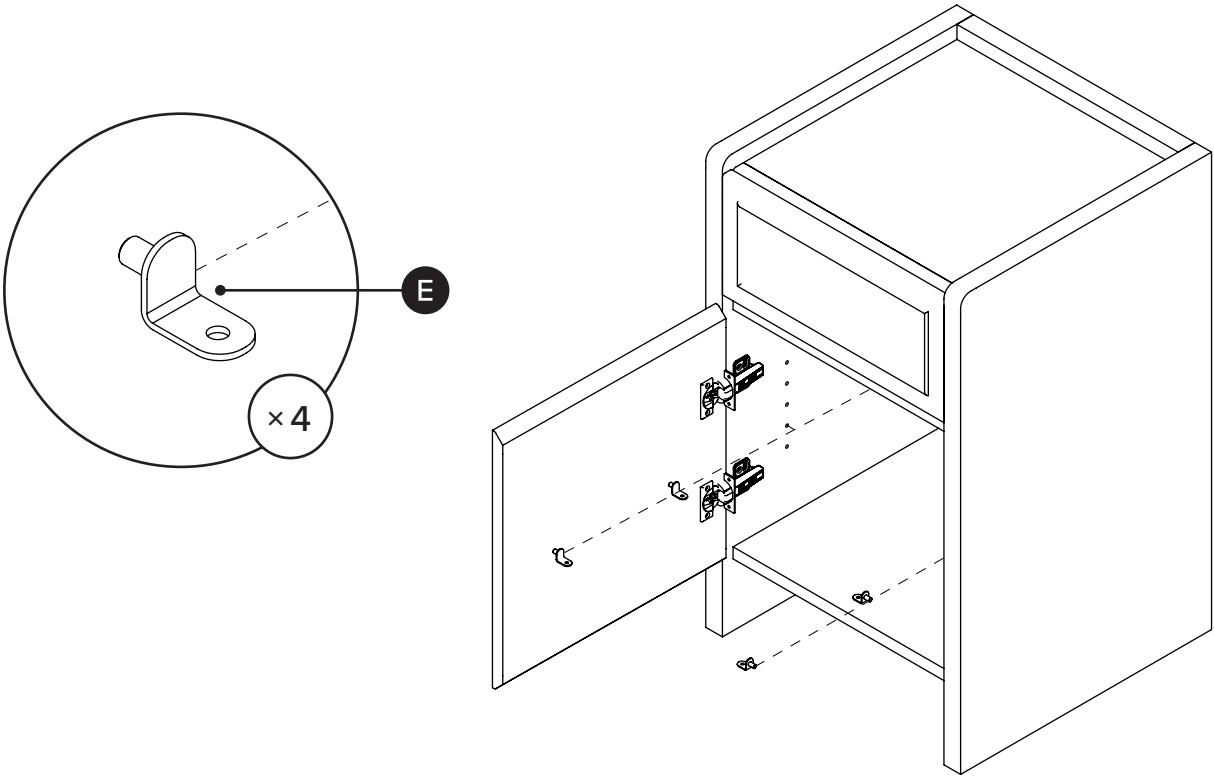
| PARTS INVENTORY | | |
|-----------------|---|-----|
| ID | DESCRIPTION | QTY |
| A | CABINET FRAME | 1 |
| B | DOOR | 1 |
| C | SHELF | 1 |
| D | M4 × 20MM SCREW  | 8 |
| E | SHELF PIN  | 4 |

1

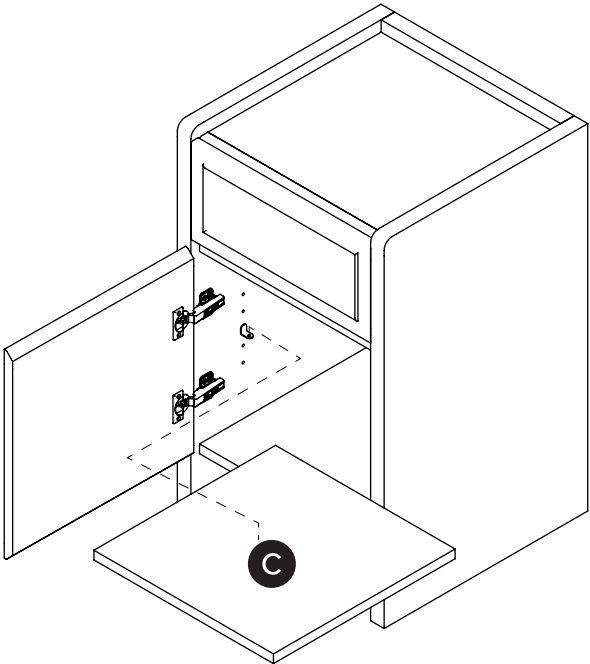
Options are available to assemble either right or left side door.



2



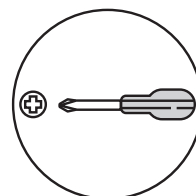
3



DOOR ADJUSTMENT INSTRUCTIONS



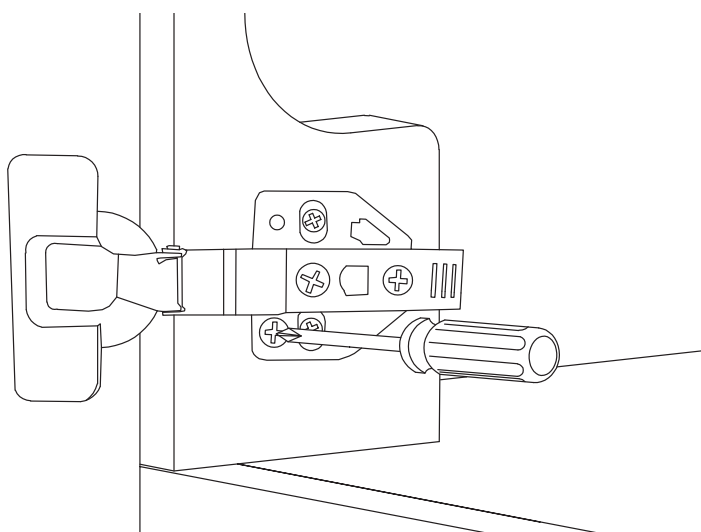
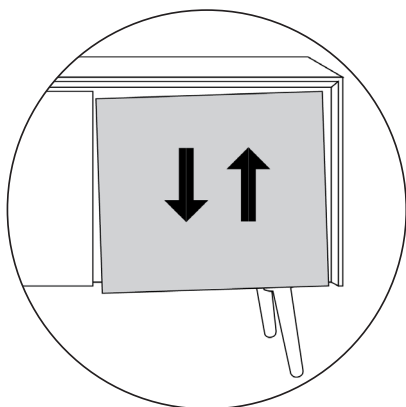
During shipping, the doors of your cabinet may have shifted slightly. This can easily be corrected by tightening a few screws. Always start by adjusting the top hinge on the affected door.



REQUIRED TOOL

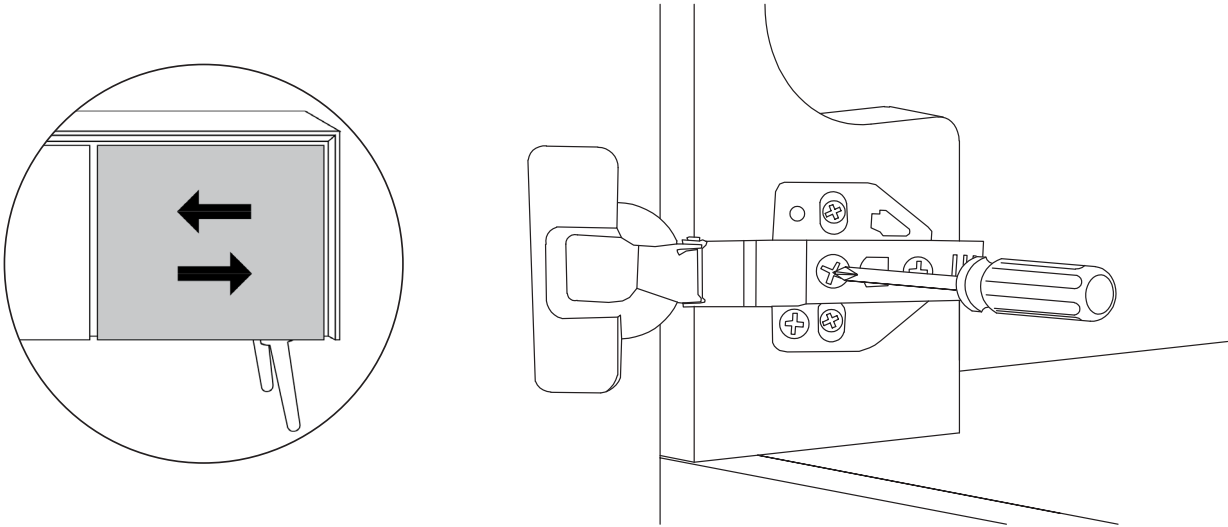
4A

If the door is crooked, adjust hinge(s) up or down:



4B

If the door needs adjustment side to side:



4C

If the door needs adjustment forward or backward:

