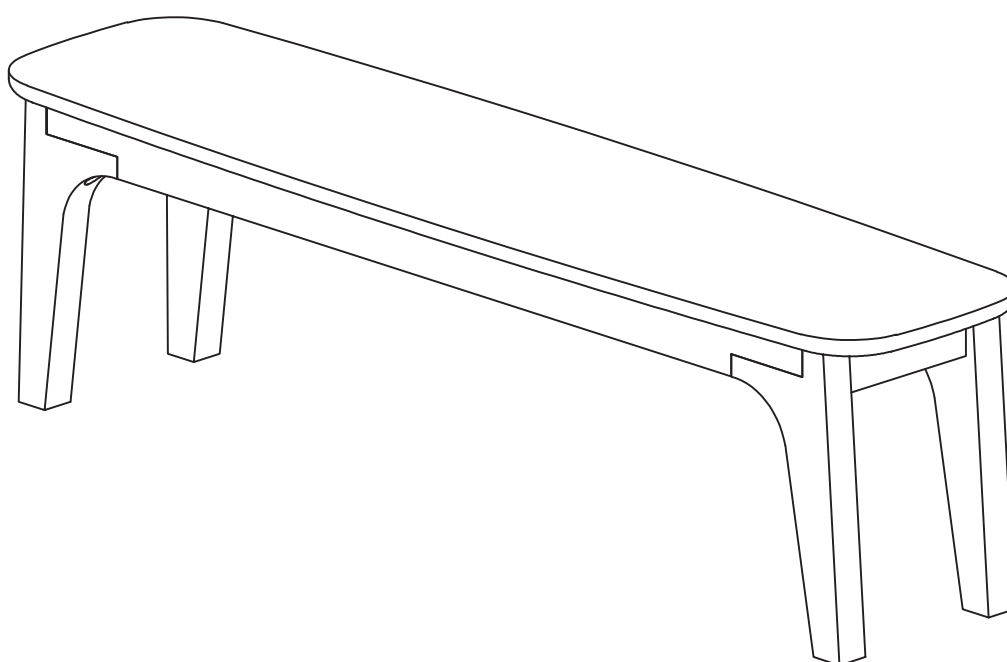


ARTICLE.

VERSION 1.0

Assembly Instructions



PLUMAS

Bench

ASSEMBLY INSTRUCTIONS

Read these instructions carefully and keep for future reference. Refer to parts inventory for guidance, and ensure you have all pieces before starting.

When assembling, place all parts on a soft, clean, and flat surface such as a carpet to prevent scratches.

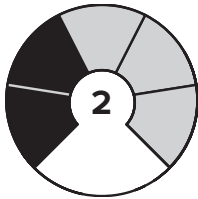
If you're having difficulty, our friendly Customer Care team is always here to help. Call us at **1.888.746.3455** during business hours, email **service@article.com** or chat live at **article.com**.



TIME


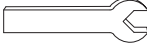






OF PEOPLE

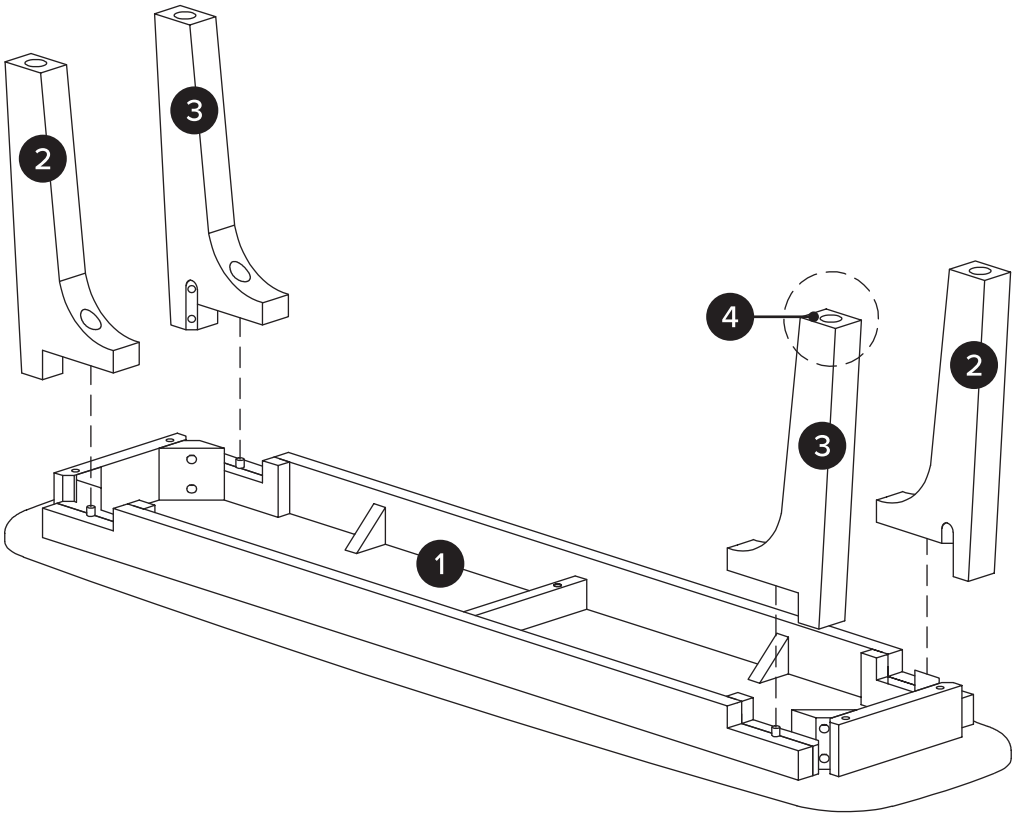
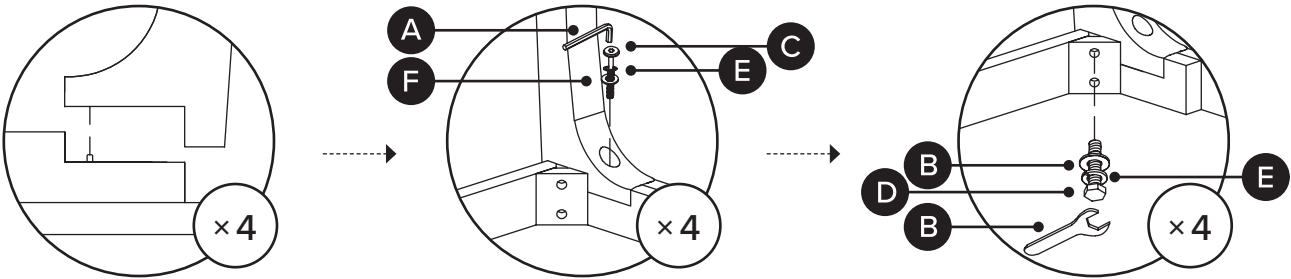


DIFFICULTY

PARTS INVENTORY		
ID	DESCRIPTION	QTY
1	BENCH TOP	1
2	LEFT LEG	2
3	RIGHT LEG	2
4	LEVELER	4

PARTS INVENTORY CONT.		
ID	DESCRIPTION	QTY
A	ALLEN KEY 	1
B	WRENCH 	1
C	M8 x 50MM BOLT 	4
D	M8 x 70MM BOLT 	8
E	LOCK WASHER 	12
F	WASHER 	12

1



Adjust the leg aligned with apron before tightening all bolts.