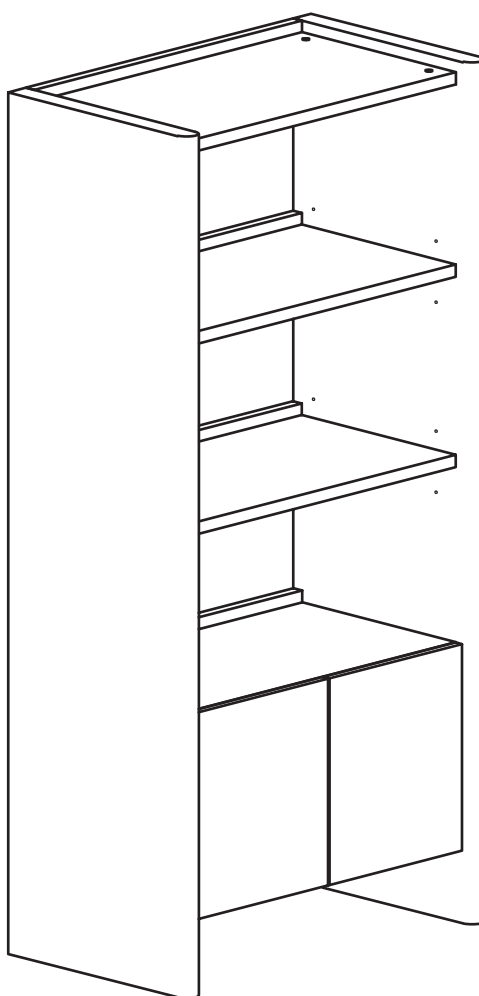


# ARTICLE.

VERSION 1.0

## Assembly Instructions



# TORME

Tall Bookcase

ASSEMBLY INSTRUCTIONS

Read these instructions carefully and keep for future reference. Refer to parts inventory for guidance, and ensure you have all pieces before starting.

When assembling, place all parts on a soft, clean, and flat surface such as a carpet to prevent scratches.

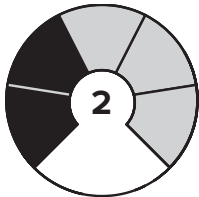
If you're having difficulty, our friendly Customer Care team is always here to help. Call us at **1.888.746.3455** during business hours, email [service@article.com](mailto:service@article.com) or chat live at [article.com](https://article.com).



TIME

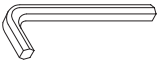
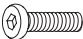








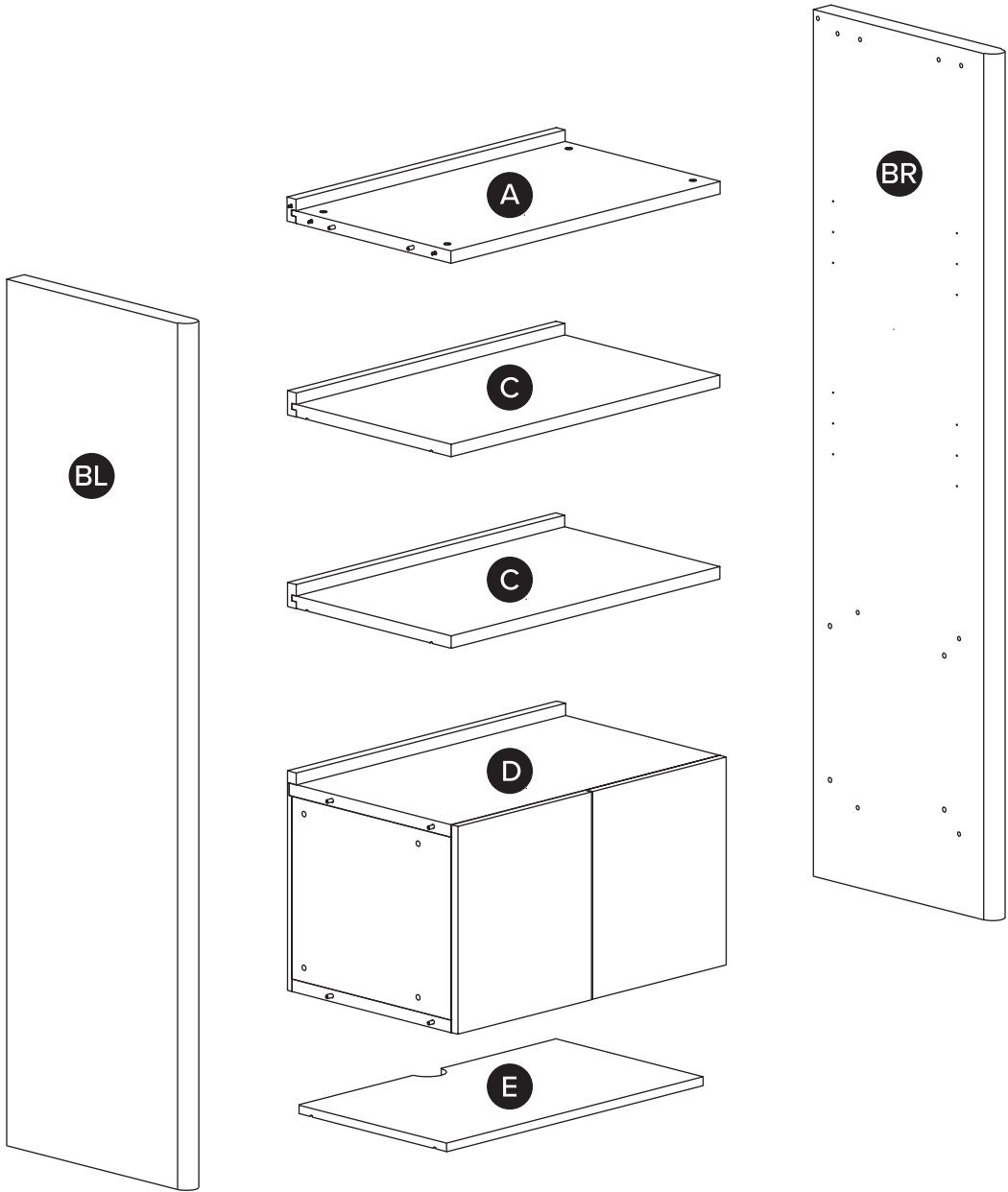
# OF PEOPLE



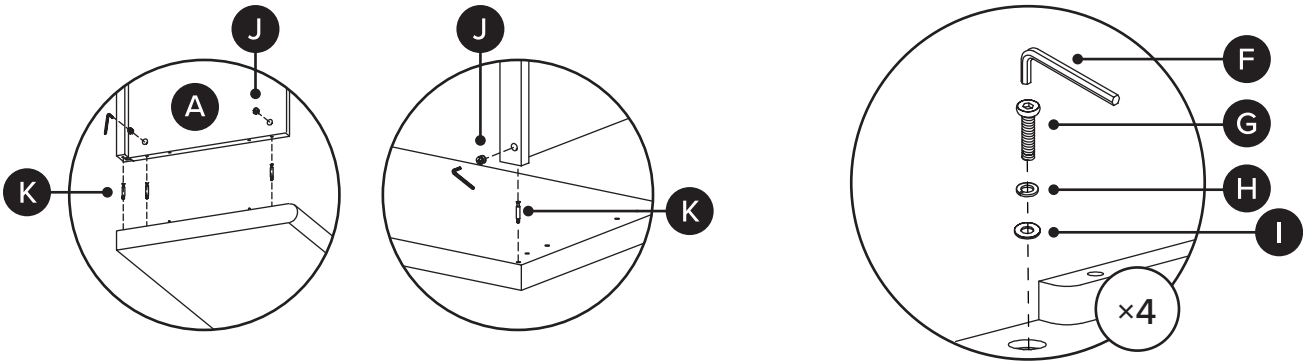
DIFFICULTY

PARTS INVENTORY		
ID	DESCRIPTION	QTY
A	TOP PANEL	1
BL	LEFT SIDE PANEL	1
BR	RIGHT SIDE PANEL	1
C	MID SHELF	2
D	CABINET BOX	1
E	INSIDE SHELF	1

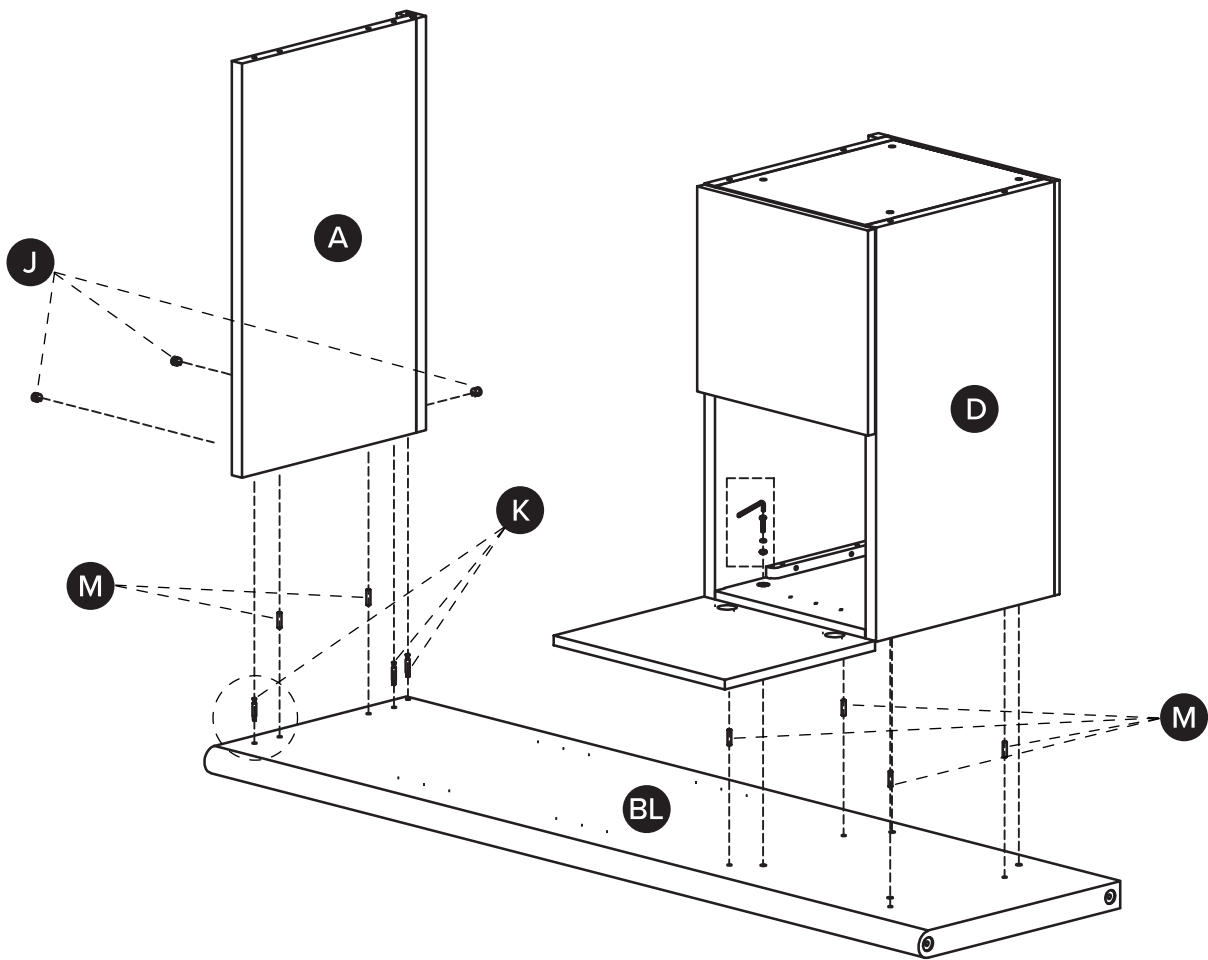
PARTS INVENTORY		
ID	DESCRIPTION	QTY
F	ALLEN KEY 	1
G	M6 x 35MM BOLT 	8
H	M6 LOCK WASHER 	8
I	M6 WASHER 	8
J	CAMLOCK 	6
K	CAM BOLT 	6
L	SHELF PIN 	12
M	WOODEN DOWEL 	12



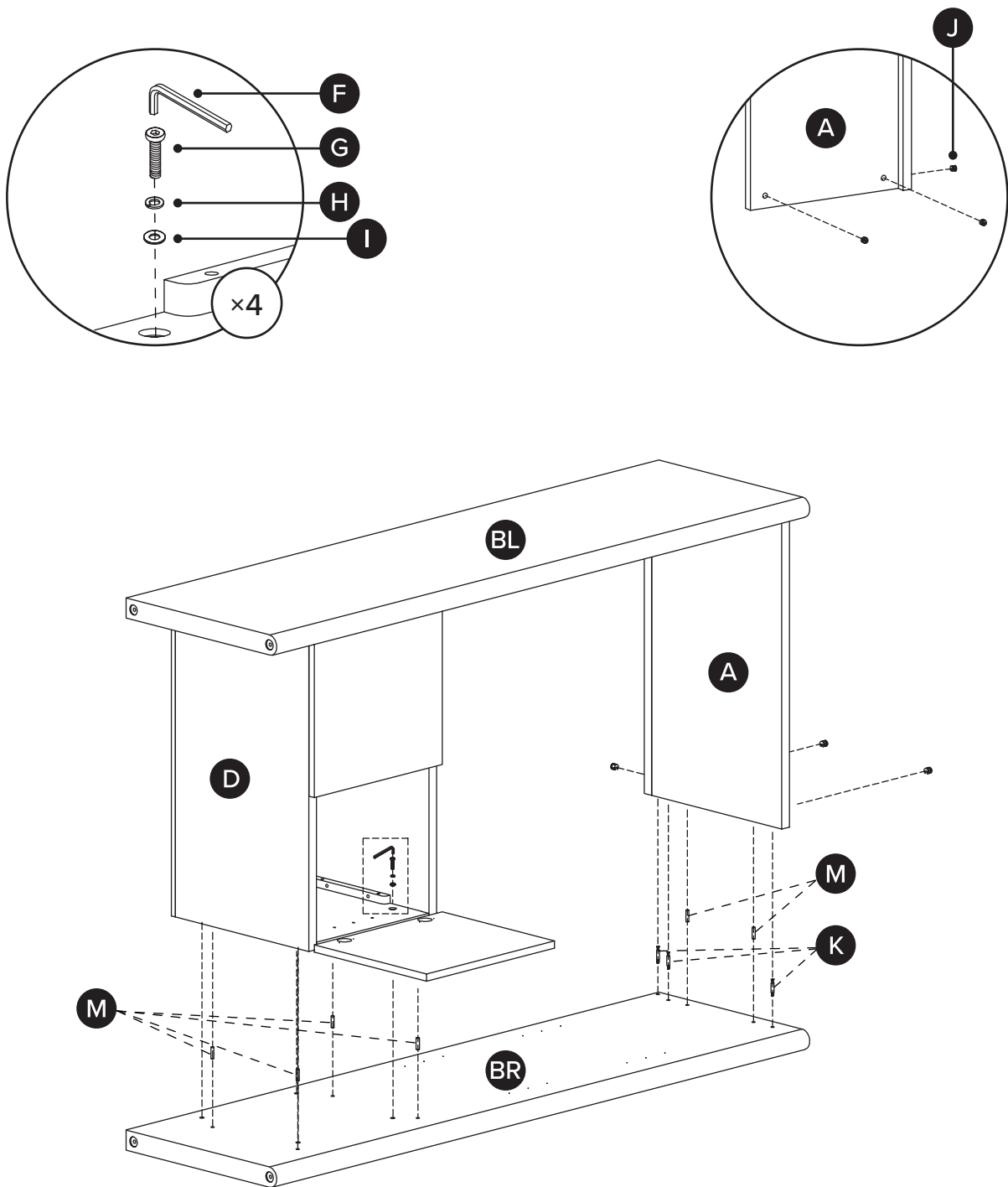
1



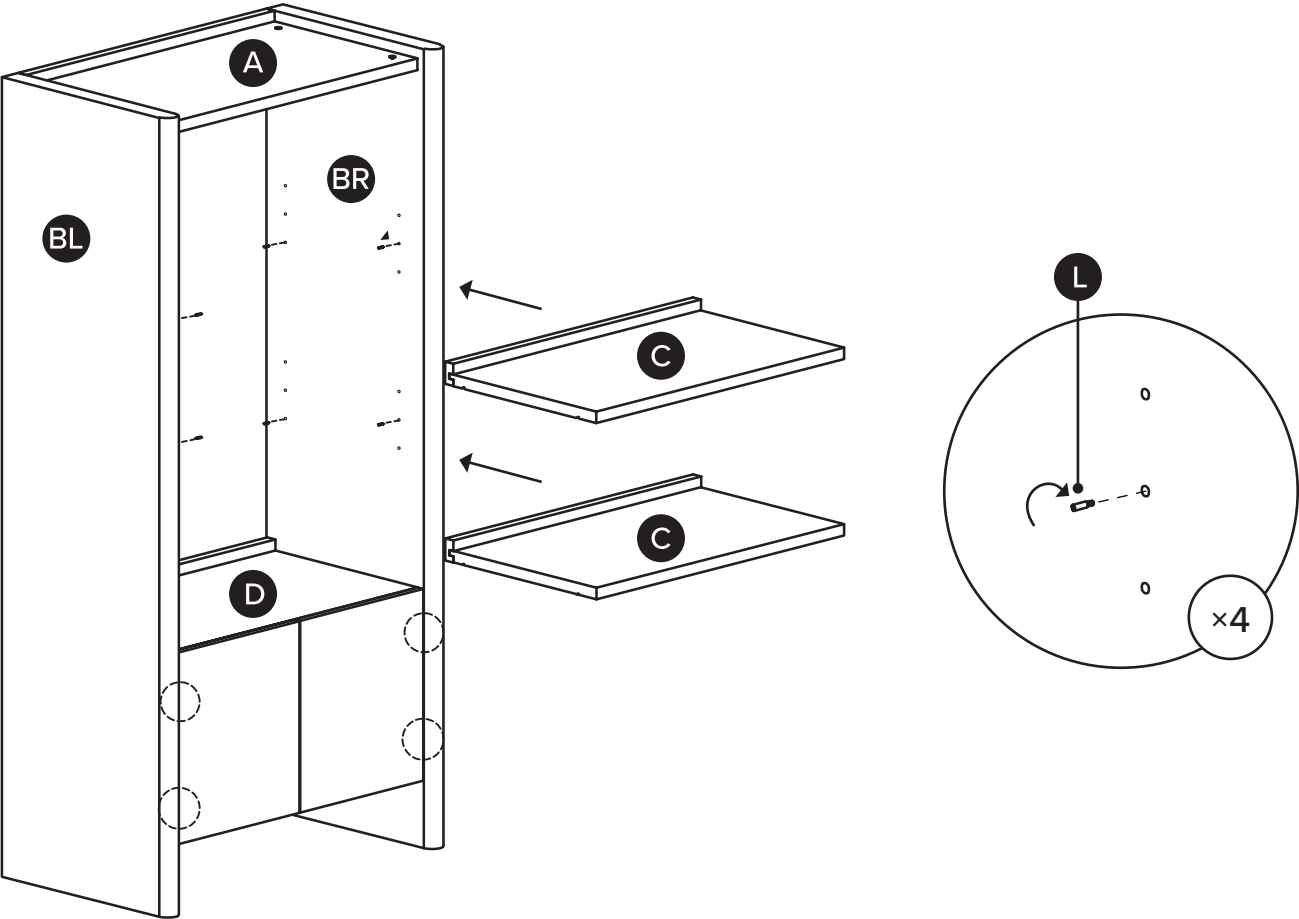
! Please ensure to put components on a flat and soft surface such as a cardboard or a rug.



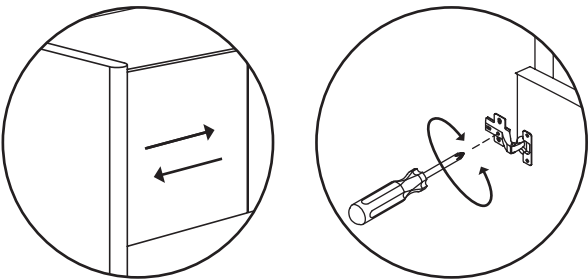
2



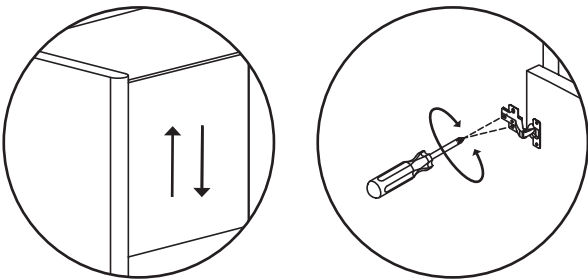
3



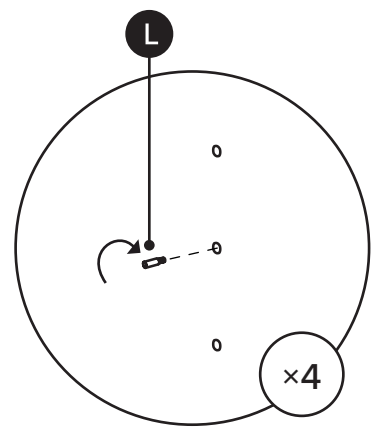
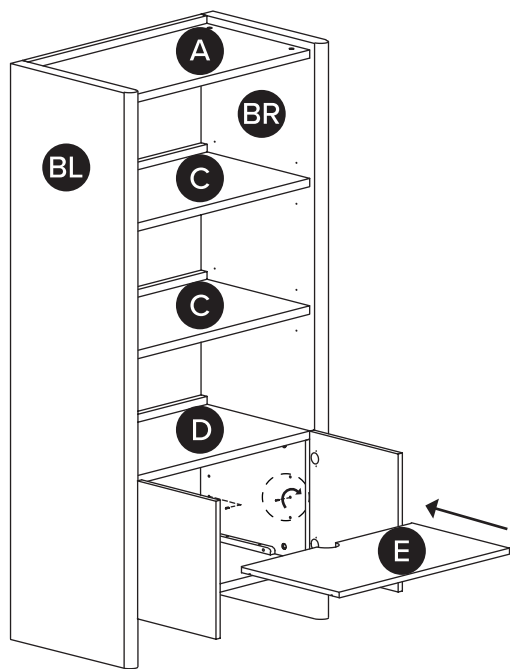
! If the door needs adjustment side to side:



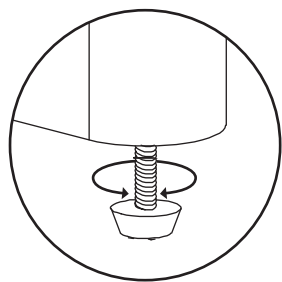
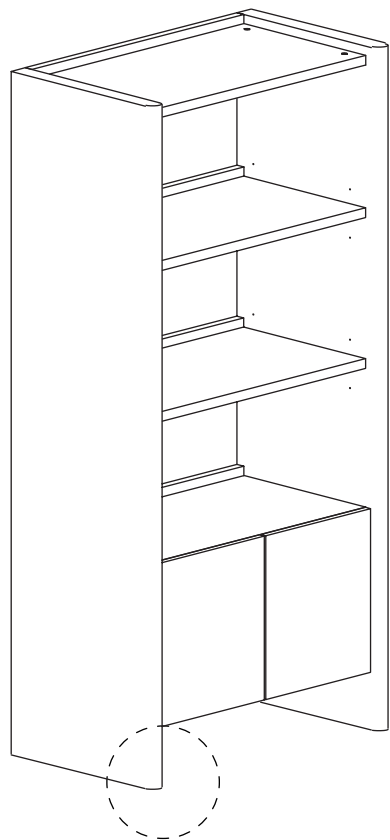
! If the door is crooked, adjust hinge(s) up or down:



4



5



! Adjust levelers as needed.



# ANTI-TIP RESTRAINT INSTALLATION

## ! WARNING!

Serious or fatal crushing injuries can occur from furniture tip-over. To help prevent tip-over:

- Install tip-over restraint provided.
- Do not set heavy objects on top of this product, unless the product is specifically designed to accomodate them.
- Never allow children to climb or hang on mirrors, shelves, consoles, or cabinets with doors and/or drawers.

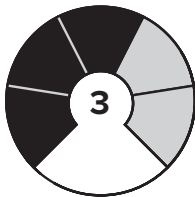
Use of tip-over restraints may only reduce but not eliminate, the risk of tip-over.



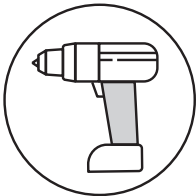
TIME



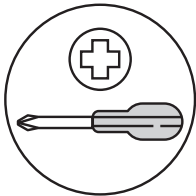
# OF PEOPLE



DIFFICULTY



REQUIRED TOOL  
8MM / 5/16" DRILL BIT



REQUIRED TOOL

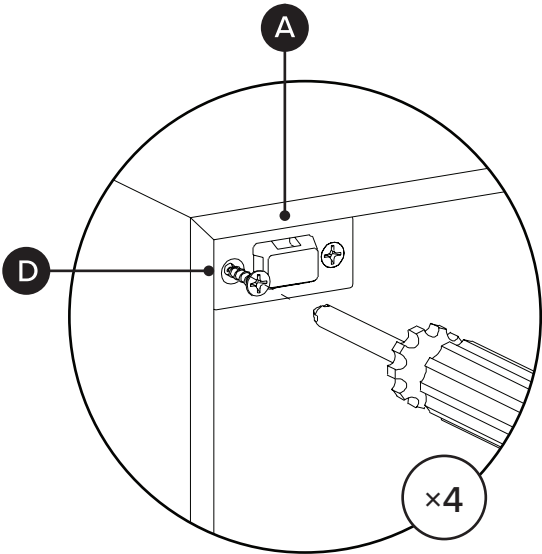
PARTS INVENTORY			
ID	DESCRIPTION		QTY
A	BRACKET		4
B	M8 × 51MM SCREW		4
C	M8 × 51MM PLUG		4
D	M4 × 20MM SCREW		4
E	STRAP		2

! Hardware (B/C) to attach brackets to wall is designed for drywall. To attach this unit to another type of wall, consult with your local hardware store.

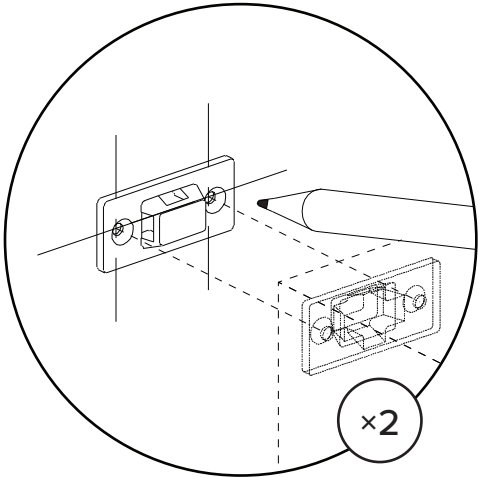


1

2

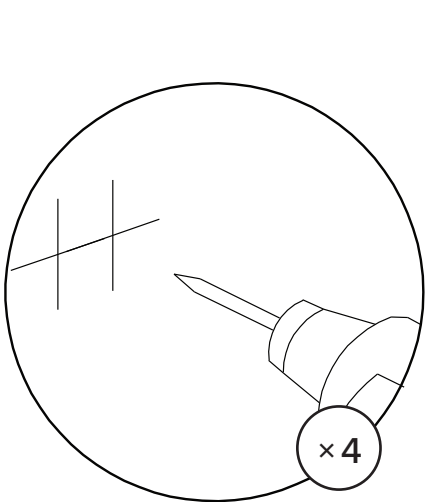


Attach pair of brackets to top corners of the back of the unit. Note there are no existing pilot holes on the product.

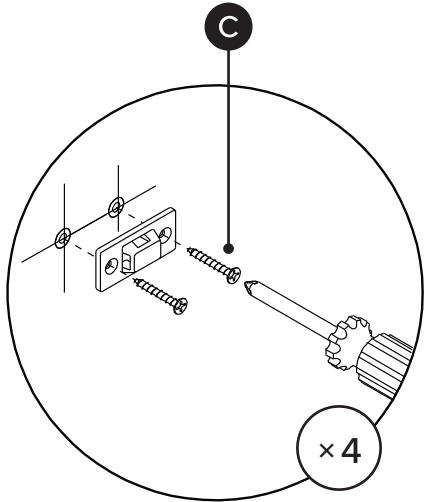
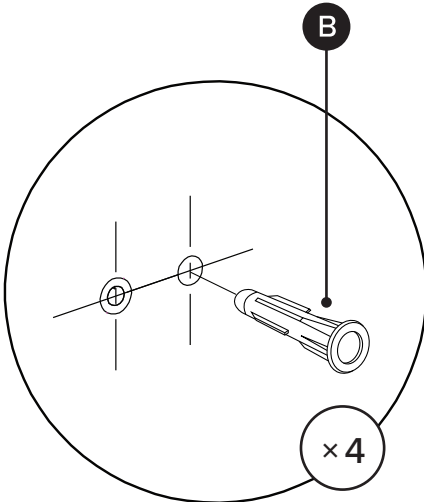


Mark on wall where second pair of brackets should be placed.

3

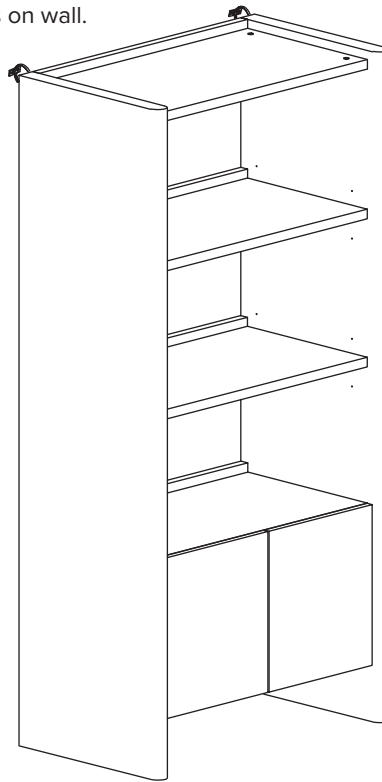


Drill holes in wall using 8mm / 5/16" drill bit.

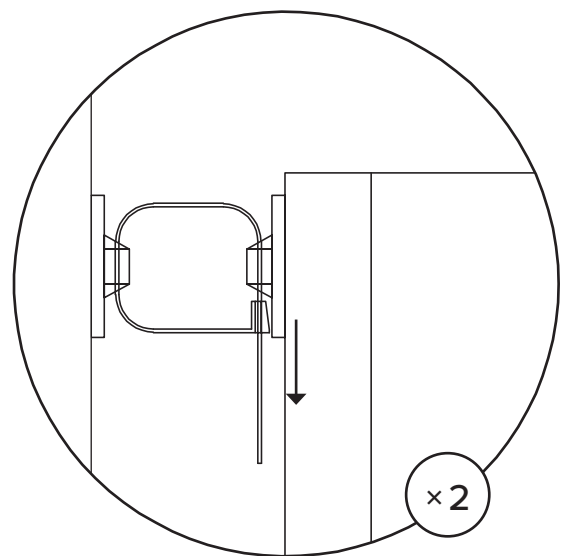
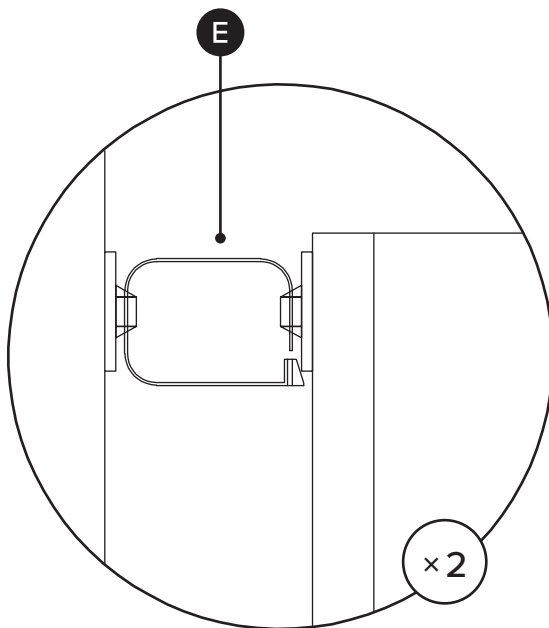


4A

Align brackets on unit  
with brackets on wall.



4B



Pull strap down until it snap-locks.