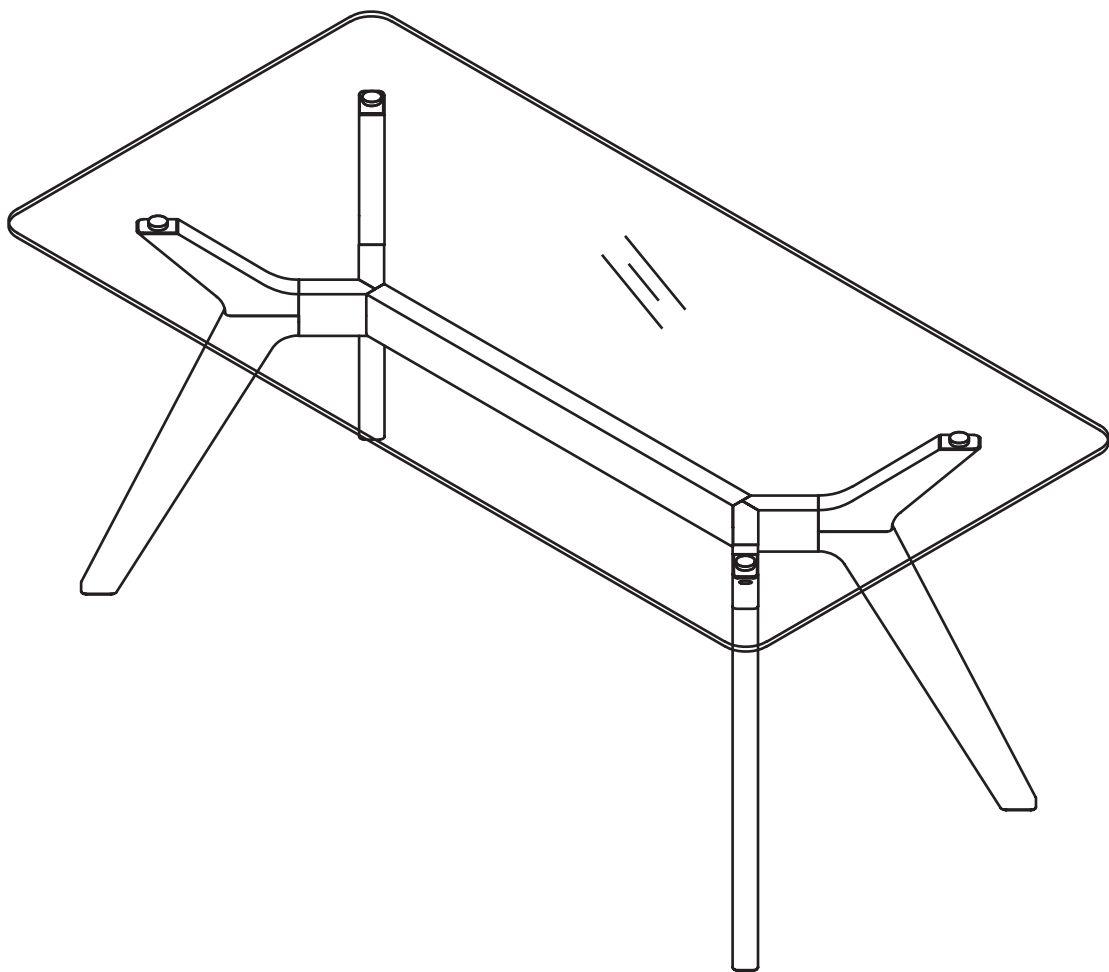


# ARTICLE.

VERSION 1.1

## Assembly Instructions



# EMMER

Dining Table For 6

ASSEMBLY INSTRUCTIONS

Read these instructions carefully and keep for future reference. Refer to parts inventory for guidance, and ensure you have all pieces before starting.

When assembling, place all parts on a soft, clean, and flat surface such as a carpet to prevent scratches.

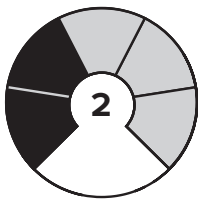
If you're having difficulty, our friendly Customer Care team is always here to help. Call us at **1.888.746.3455** during business hours, email **service@article.com** or chat live at **article.com**.



TIME








# OF PEOPLE

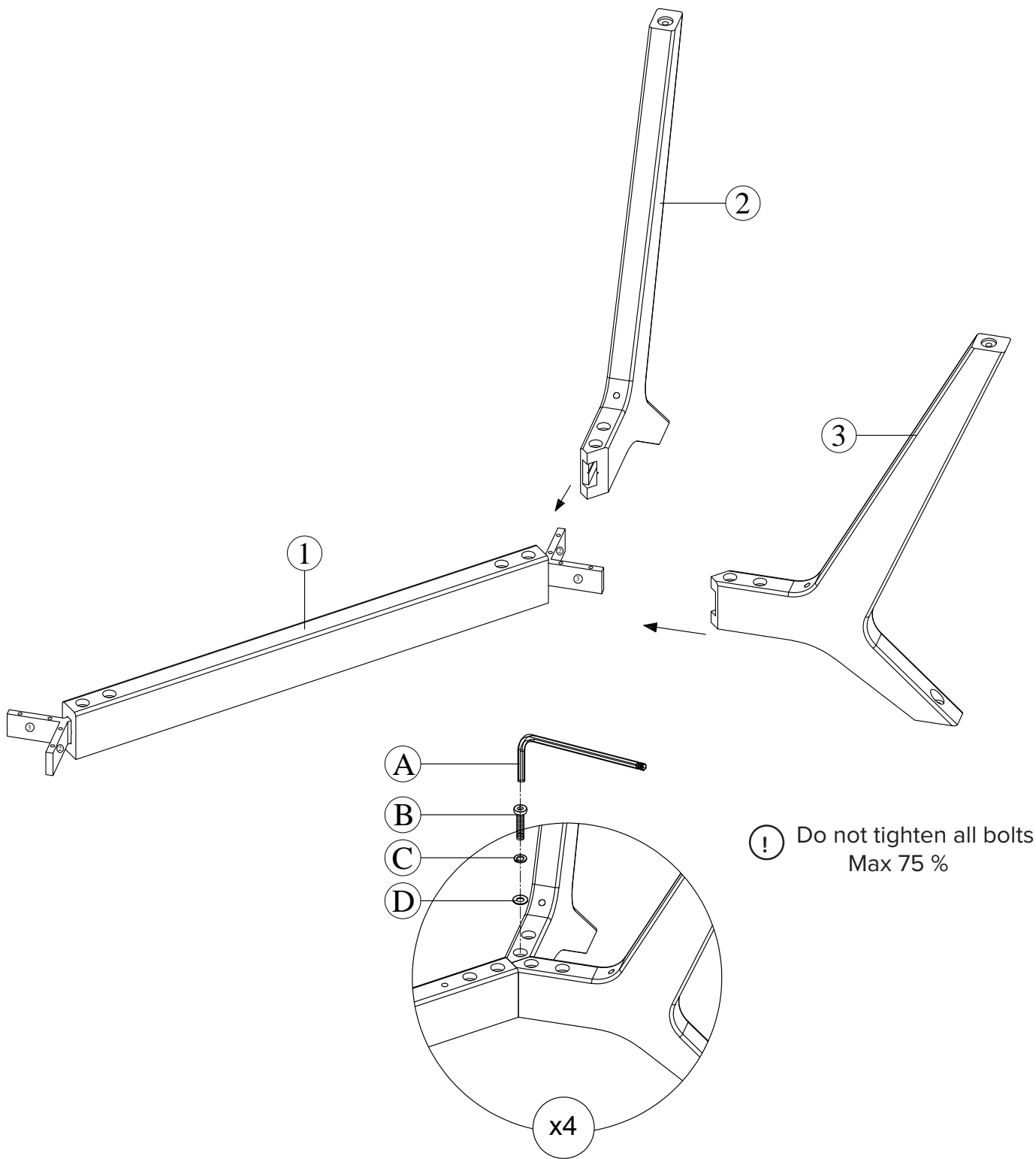


DIFFICULTY

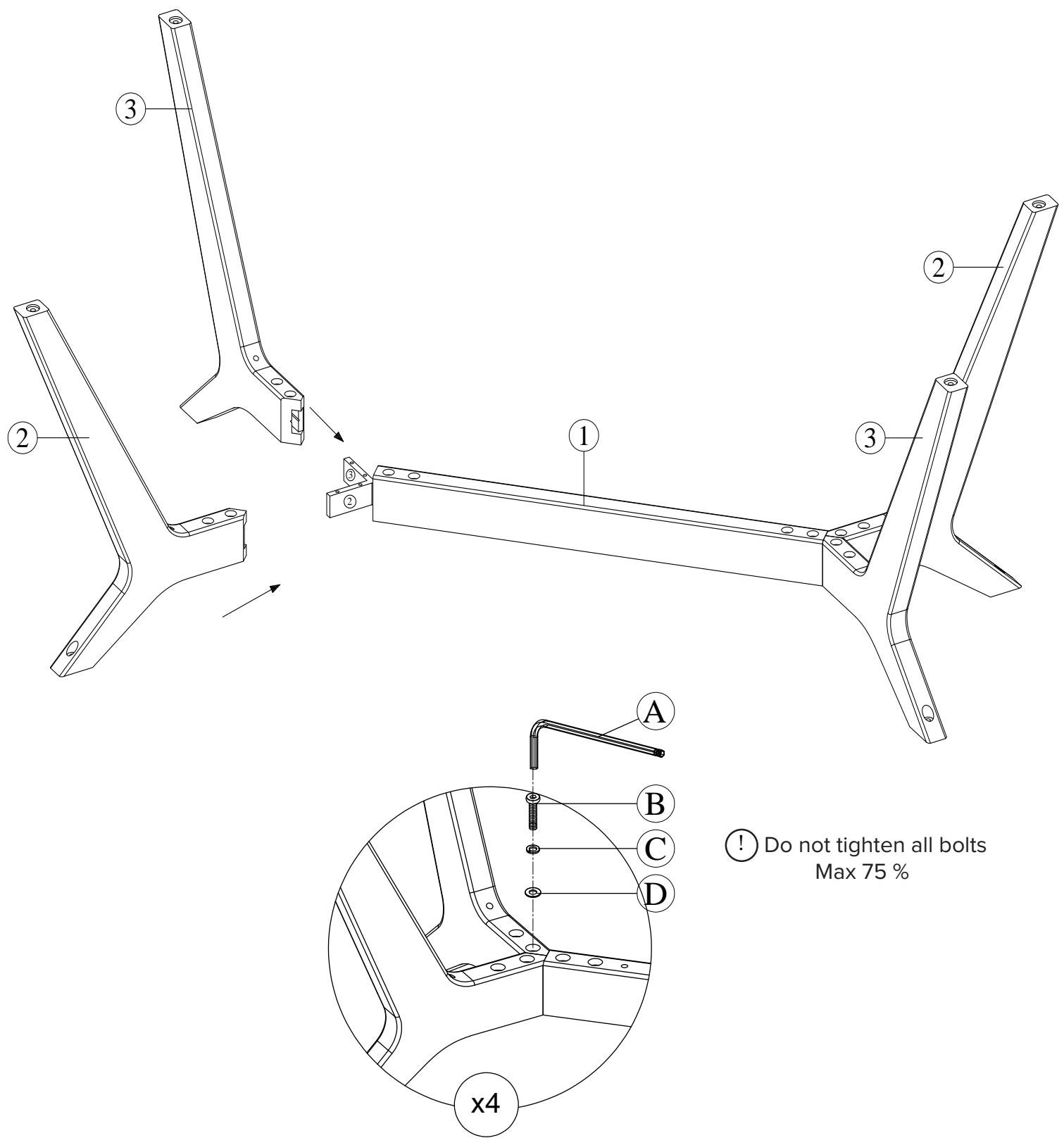
PARTS INVENTORY		
ID	DESCRIPTION	QTY
1	SUPPORT BAR	1
2	LEG PART 1	2
3	LEG PART 2	2
4	GLASS TABLE TOP	1

PARTS INVENTORY CONT.		
ID	DESCRIPTION	QTY
A	ALLEN KEY 	1
B	M8X30 MM BOLT 	8
C	SPRING WASHER 	12
D	FLAT WASHER 	12
E	M8X20 MM BOLT 	4

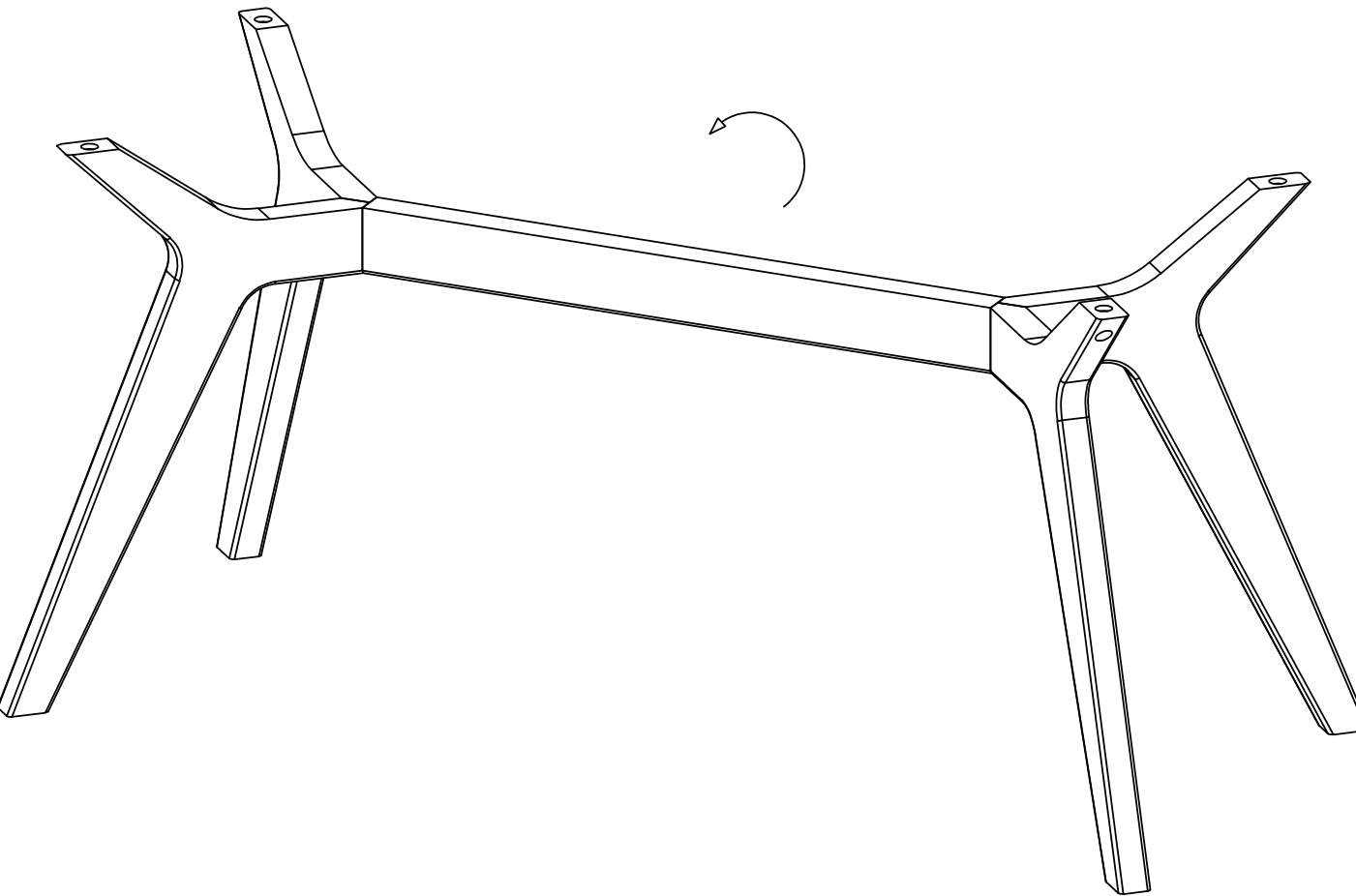
1



2

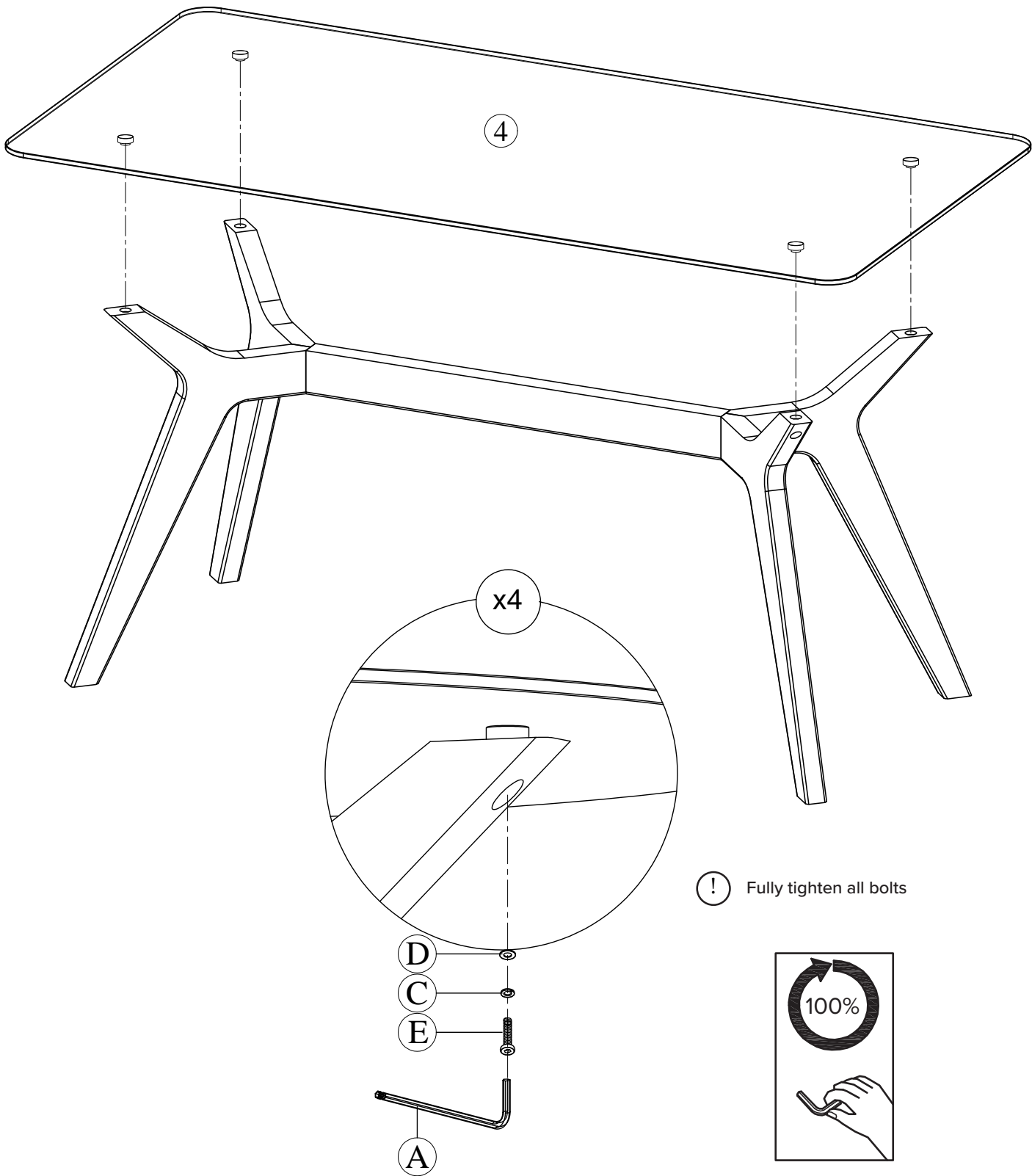


3



4

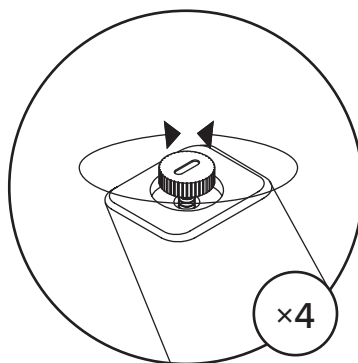
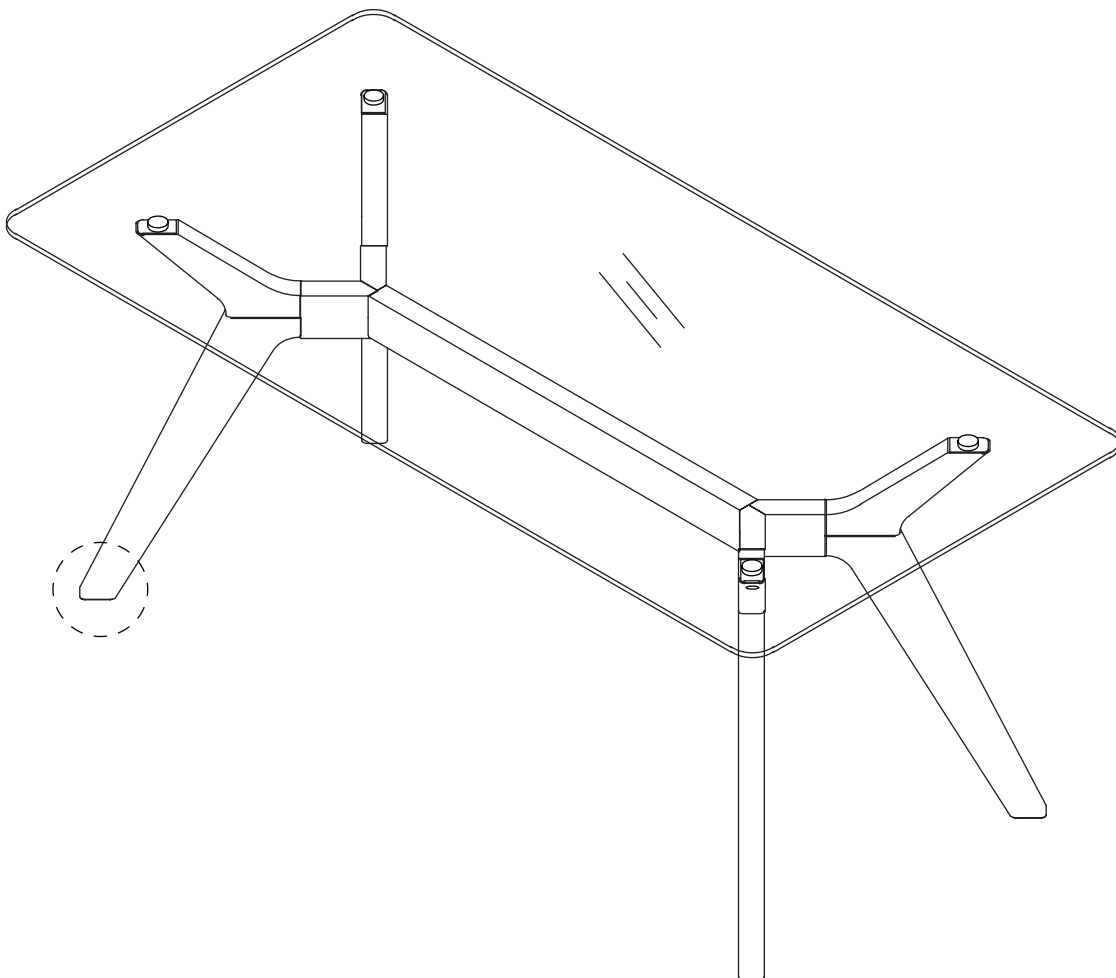
Place Aluminum cup into the Legs hole



5



Structural integrity is warranted only if all fasteners are properly installed & tightened. The glass top is placed and maintained at the right position as per instructions.



Adjust levelers on legs as needed.