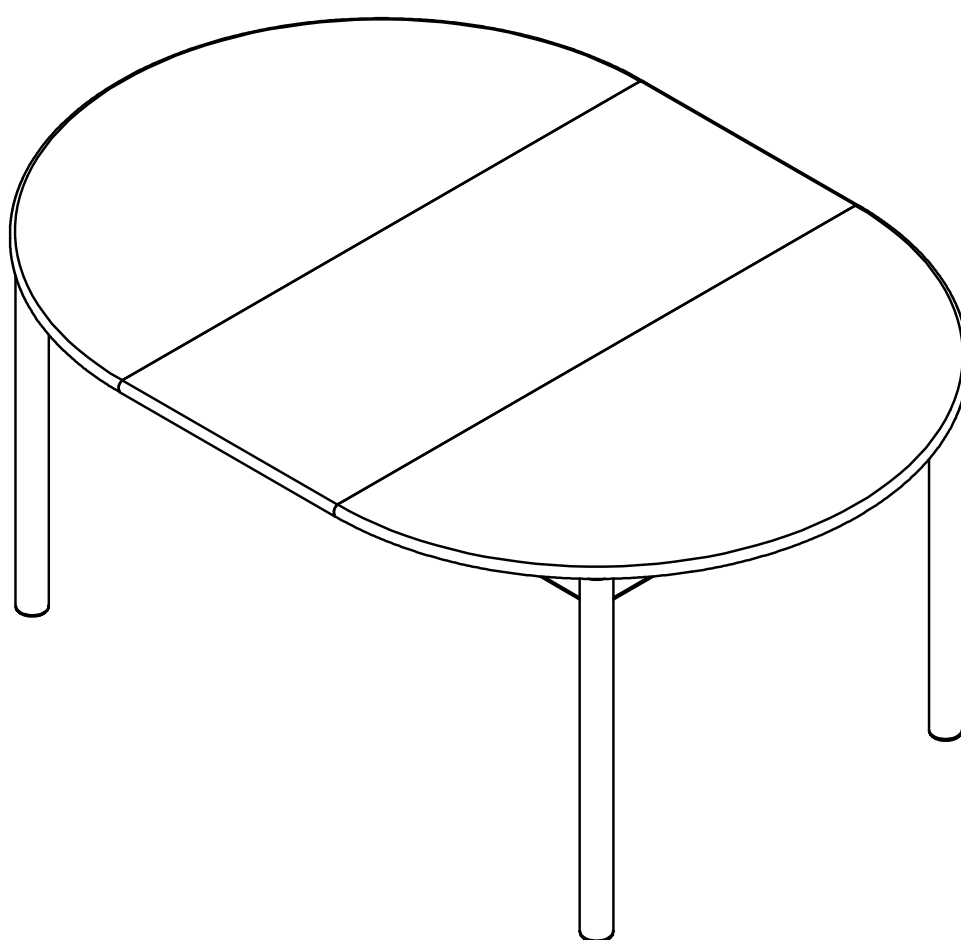


ARTICLE.

VERSION 1.0

Assembly Instructions



HEIDI

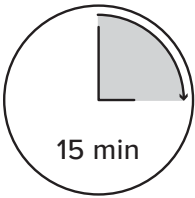
HEIDI EXTENDABLE DINING TABLE FOR 6

ASSEMBLY INSTRUCTIONS

Read these instructions carefully and keep for future reference. Refer to parts inventory for guidance, and ensure you have all pieces before starting.

When assembling, place all parts on a soft, clean, and flat surface such as a carpet to prevent scratches.

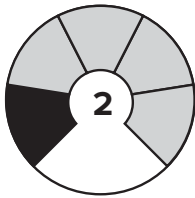
If you’re having difficulty, our friendly Customer Care team is always here to help. Call us at **1.888.746.3455** during business hours, email **service@article.com** or chat live at **article.com**.



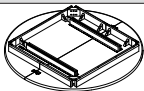
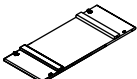
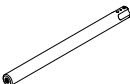
TIME


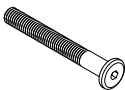




OF PEOPLE

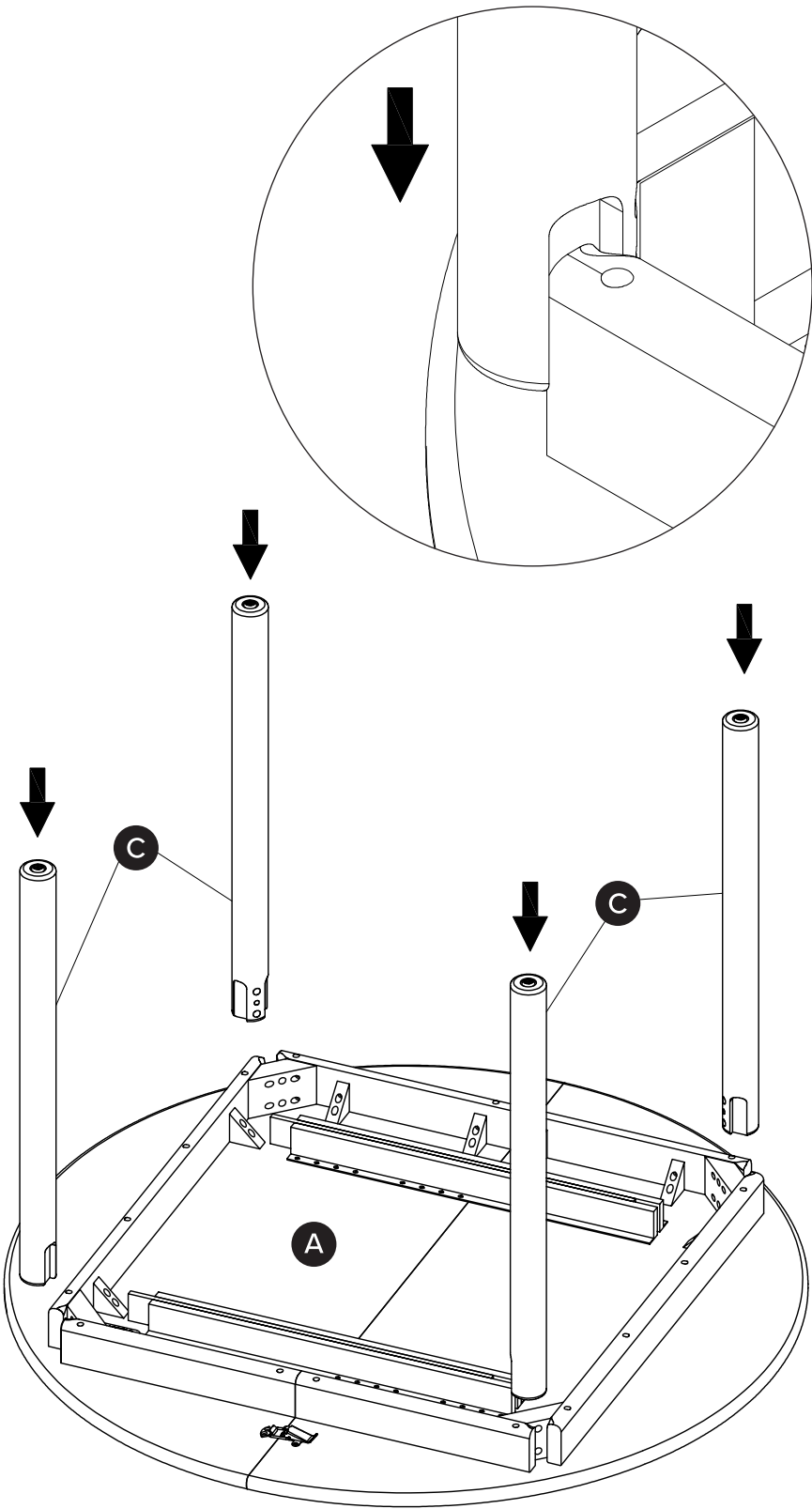


DIFFICULTY

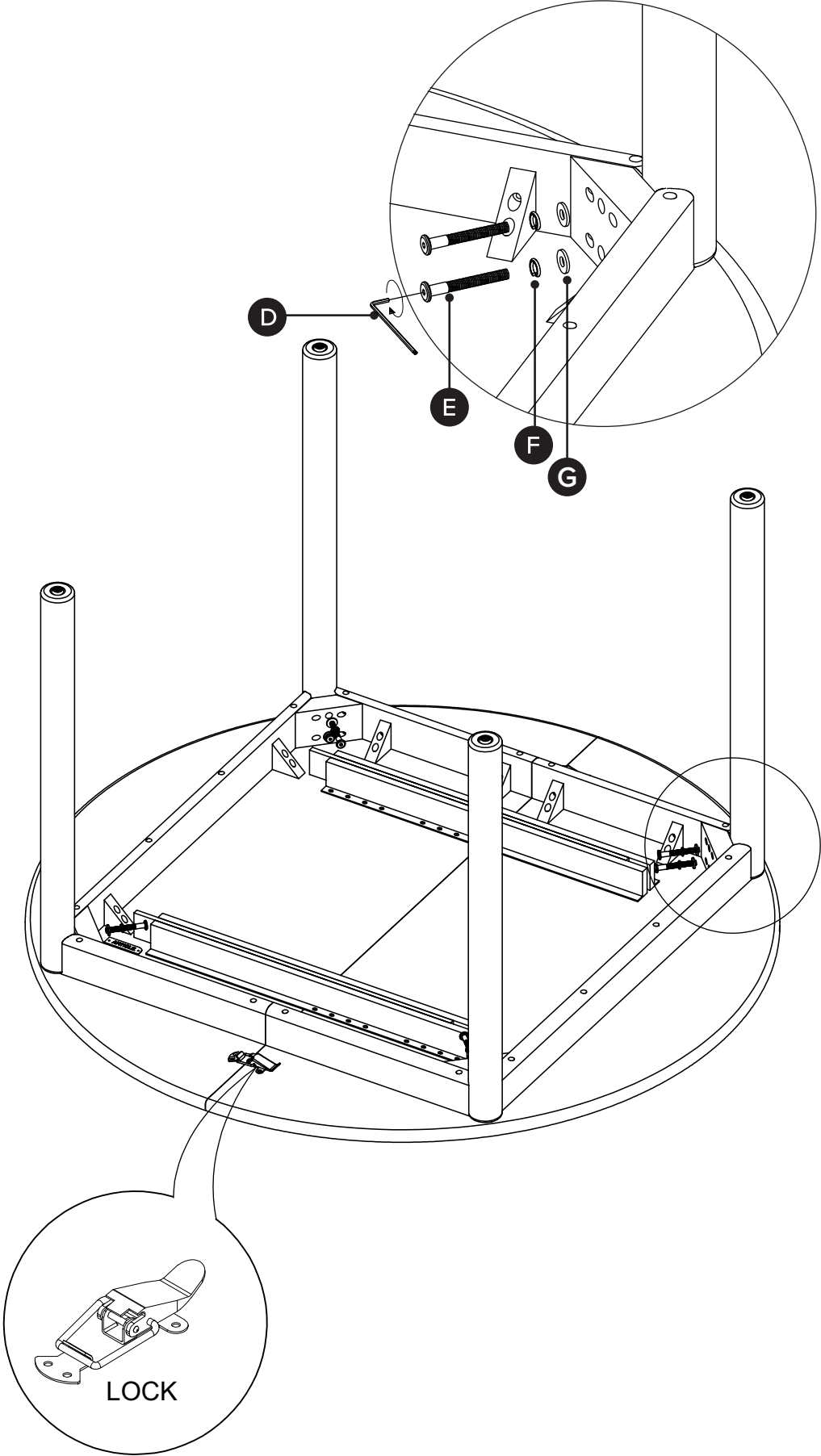
PARTS INVENTORY		
ID	DESCRIPTION	QTY
A	TABLE TOP 	1
B	EXTENSION LEAF 	1
C	LEGS 	4

PARTS INVENTORY CONT.		
ID	DESCRIPTION	QTY
D	ALLEN KEY 	1
E	M8 × 70MM BOLT 	8
F	M8 LOCK WASHER 	8
G	M8 WASHER 	8

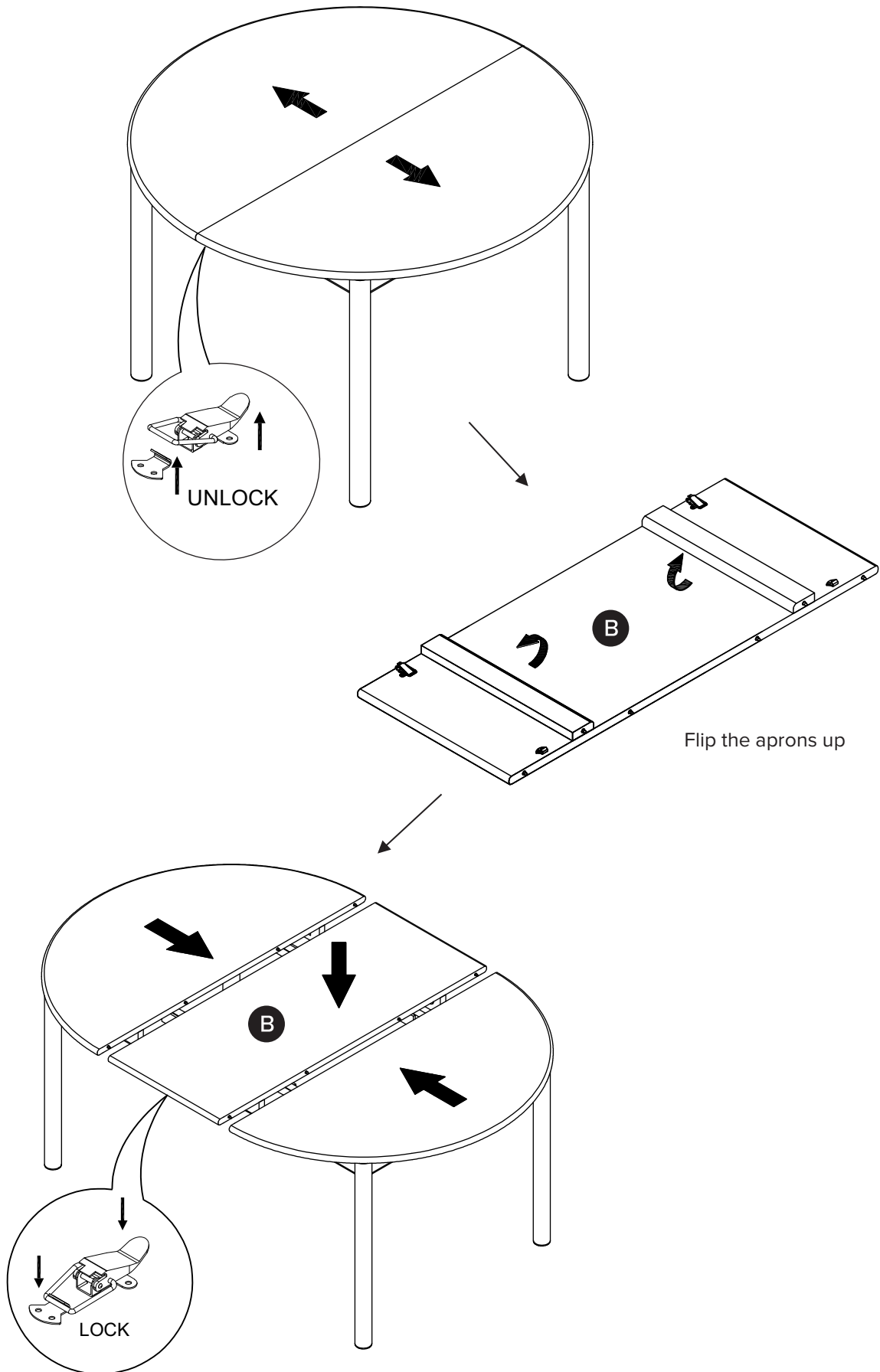
1



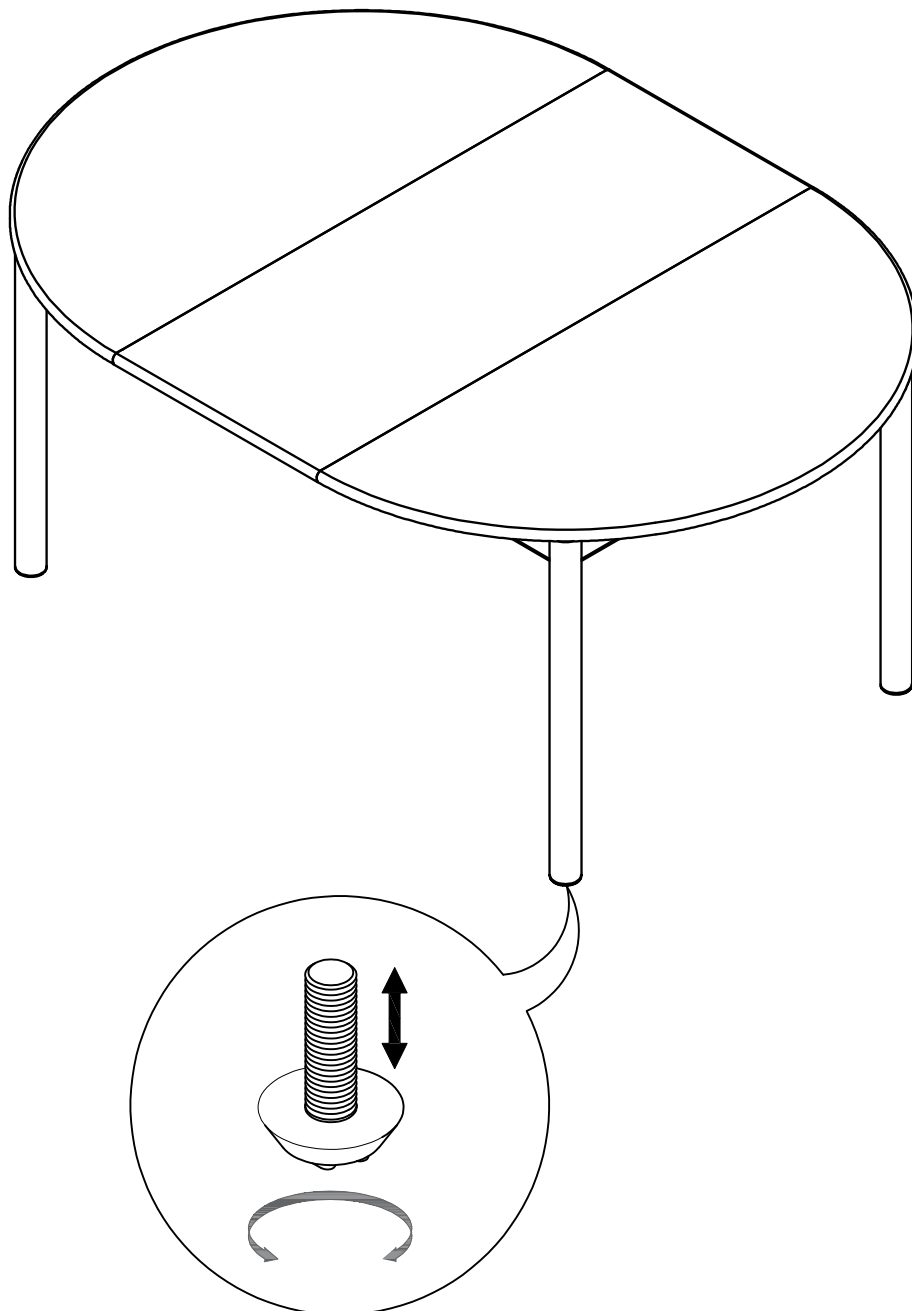
2



3



4



Adjust the leveler to
balance the products.