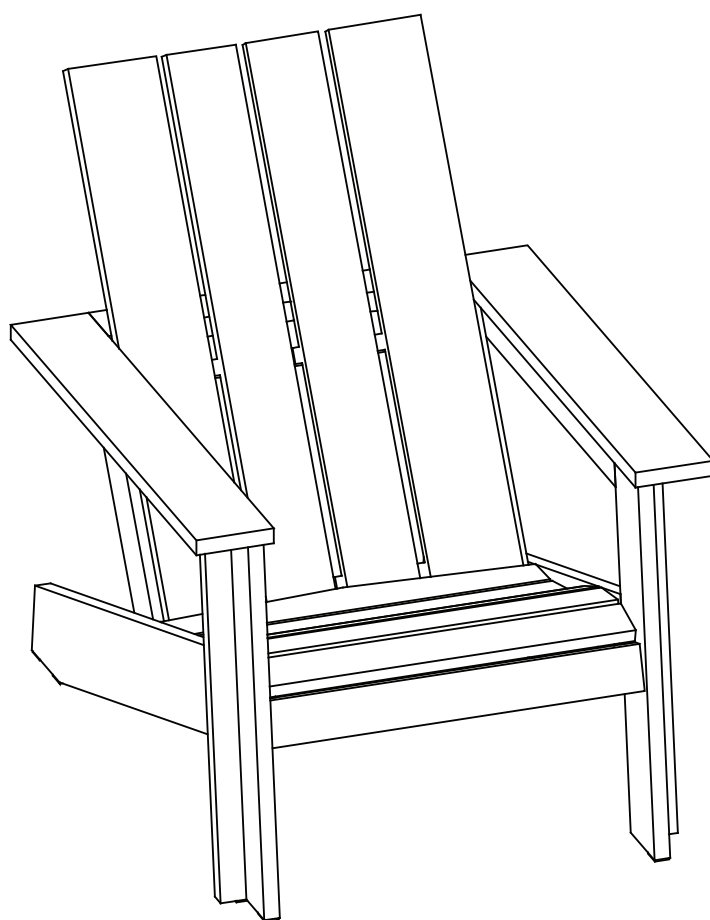


ARTICLE.

VERSION 1.1

Assembly Instructions



RENA

Outdoor Adirondack Chair



ASSEMBLY INSTRUCTIONS


Read these instructions carefully and keep for future reference. Refer to parts inventory for guidance, and ensure you have all pieces before starting.

When assembling, place all parts on a soft, clean, and flat surface such as a carpet to prevent scratches.

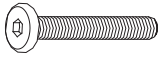


If you’re having difficulty, our friendly Customer Care team is always here to help. Call us at 1.888.746.3455 during business hours, email service@article.com or chat live at article.com.



PARTS INVENTORY		
ID	DESCRIPTION	QTY
A	Seat cluster 	1
B	Backrest 	1

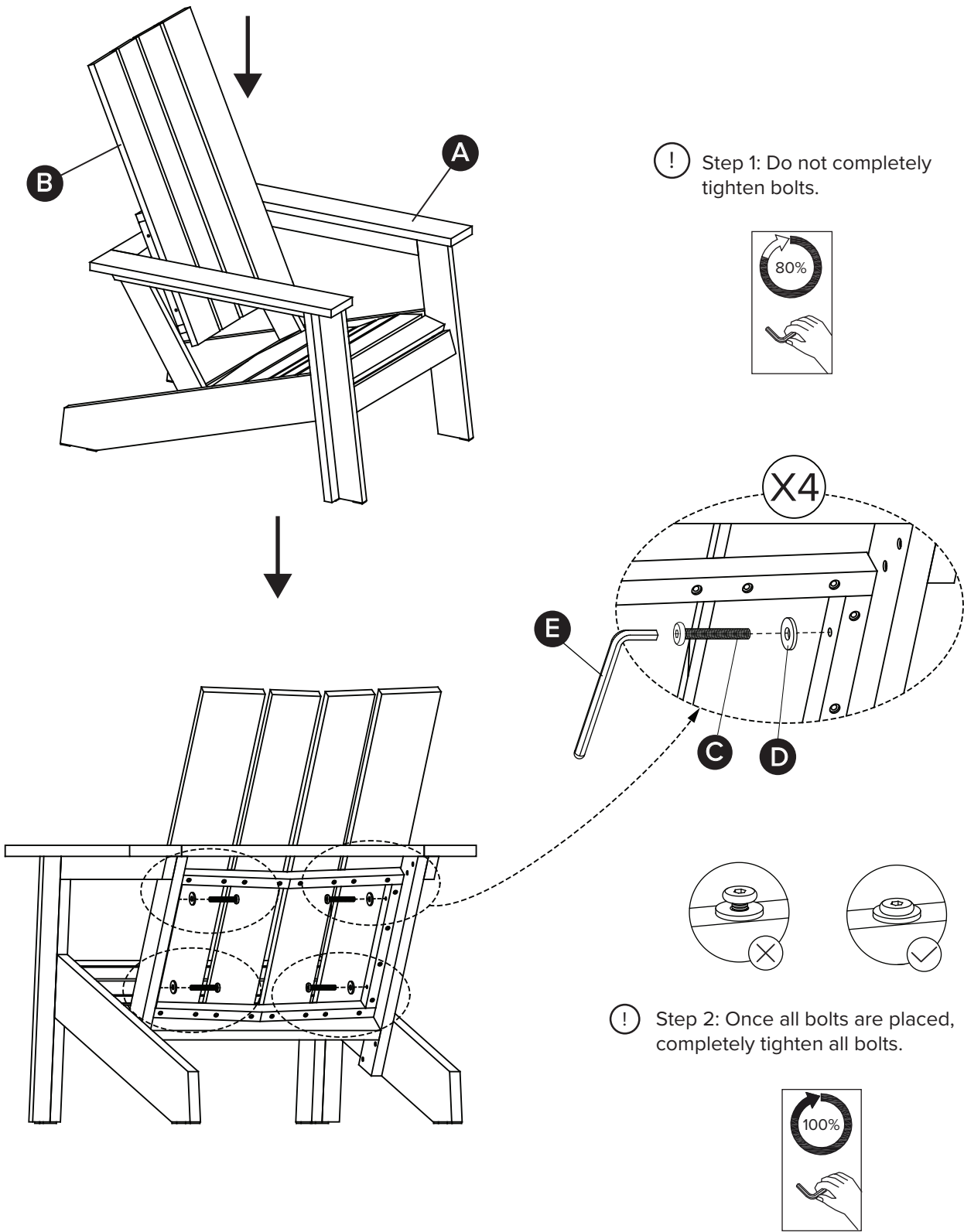


Hardware may loosen over time , check the bolts regularly and tighten if necessary.

HARDWARE INVENTORY		
ID	DESCRIPTION	QTY
C	Bolt M6X40mm 	4
D	Washer Ø18x2mm 	4
E	Allen key M4x80mm 	1

1

Insert Backrest (B) align with holes on seat deck (A) and secure with Bolts (C), Washer (D) by using Allen key (E).



2

Your Chair is ready to be used.

