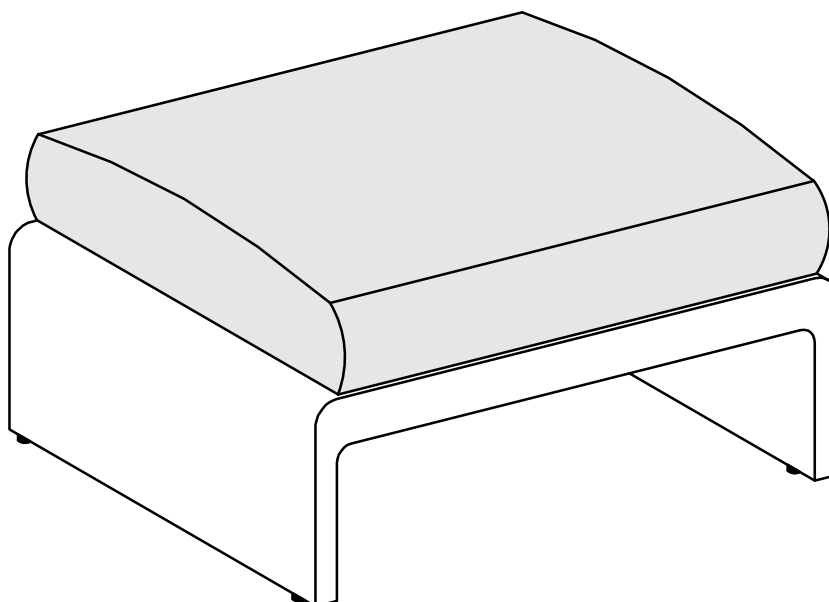


ARTICLE.

VERSION 1.0

Assembly Instructions



WILLA

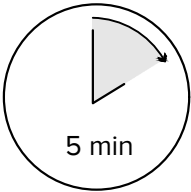
Outdoor Wicker Ottoman

ASSEMBLY INSTRUCTIONS

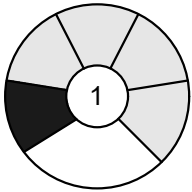
Read these instructions carefully and keep for future reference. Refer to parts inventory for guidance, and ensure you have all pieces before starting.

When assembling, place all parts on a soft, clean, and flat surface such as a carpet to prevent scratches.

If you’re having difficulty, our friendly Customer Care team is always here to help. Call us at 1.888.746.3455 during business hours, email service@article.com or chat live at article.com.



TIME



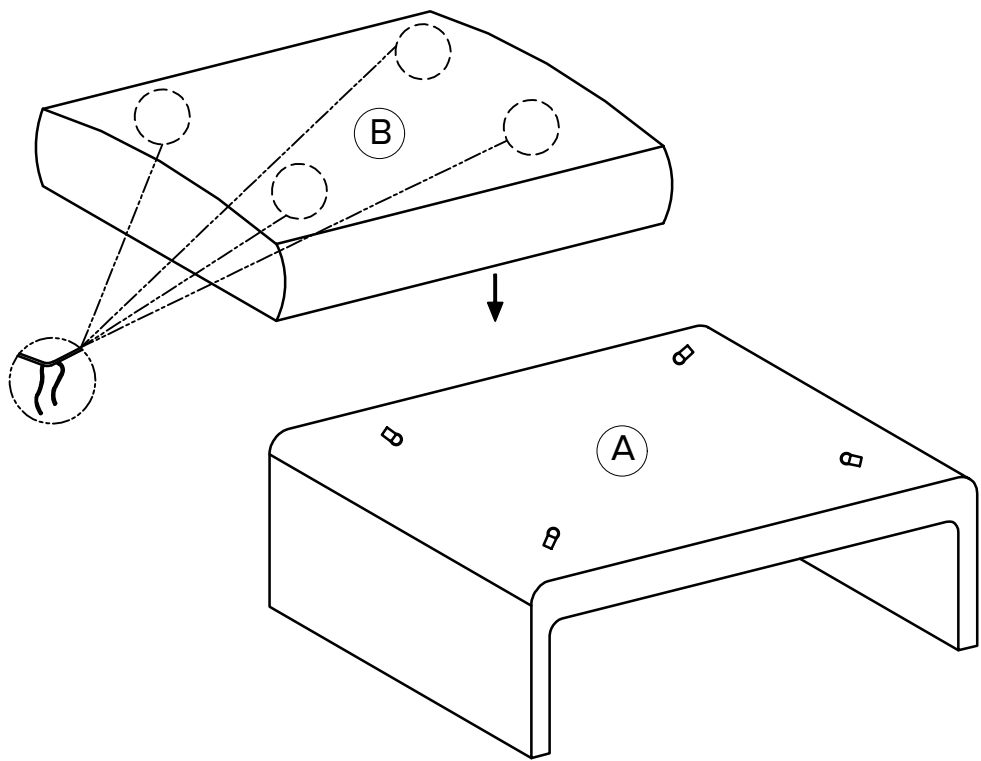
DIFFICULTY



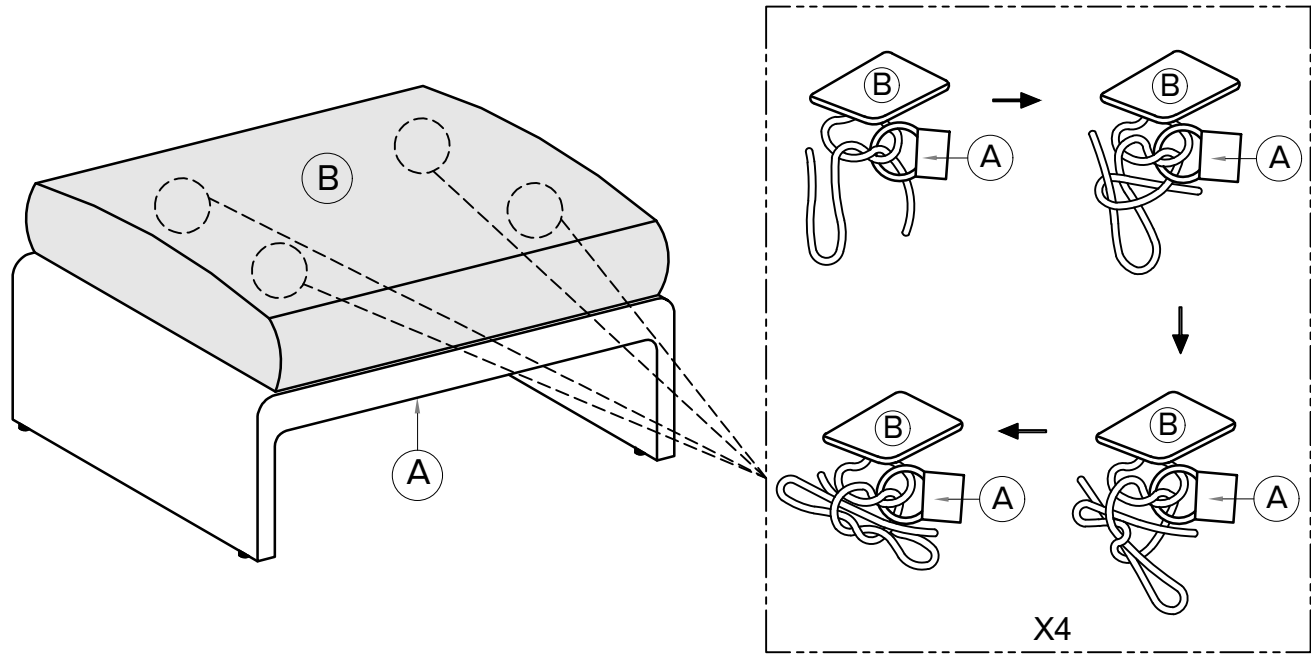
2 OF PEOPLE

PARTS INVENTORY		
ID	DESCRIPTION	QTY
(A)	OTTOMAN	1
(B)	SEAT CUSHION	1

2



ⓘ Attach the seat cushion B to the Ottoman by tighten the ropes form the under side



3

! Adjust the levelers at the bottom of the Ottoman (if needed) to balance Ottoman

