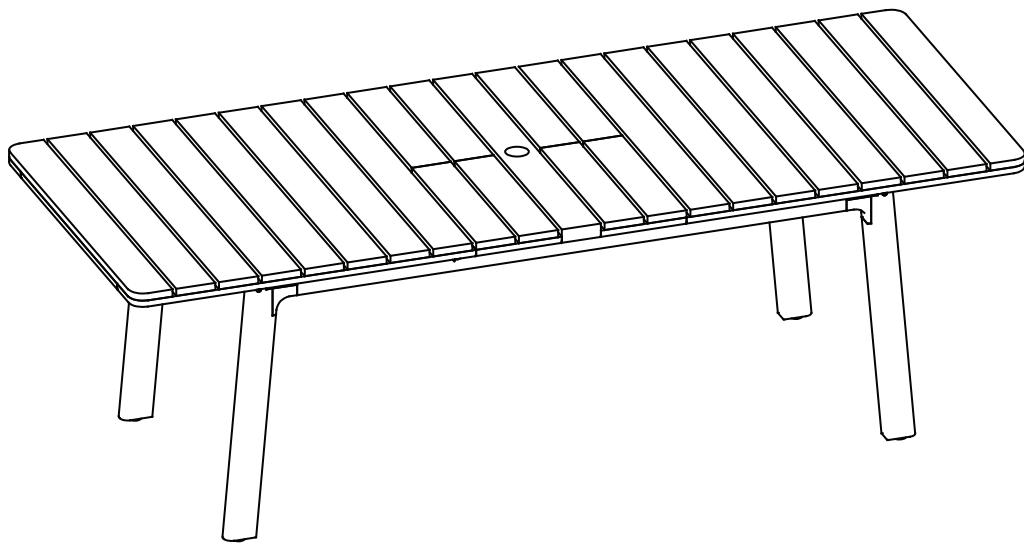


ARTICLE.

VERSION 1.1

Assembly Instructions



Elise

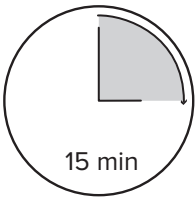
76.5" - 94.5" Outdoor Extendable Dining Table

ASSEMBLY INSTRUCTIONS

Read these instructions carefully and keep for future reference. Refer to parts inventory for guidance, and ensure you have all pieces before starting.

When assembling, place all parts on a soft, clean, and flat surface such as a carpet to prevent scratches.

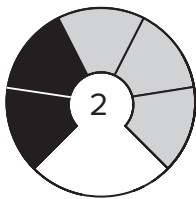
If you're having difficulty, our friendly Customer Care team is always here to help. Call us at 1.888.746.3455 during business hours, email service@article.com or chat live at article.com.



TIME








2 PEOPLE





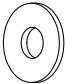


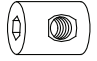



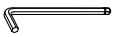
DIFFICULTY

!

Hardware may loosen over time, check the bolts regularly and tighten if necessary.

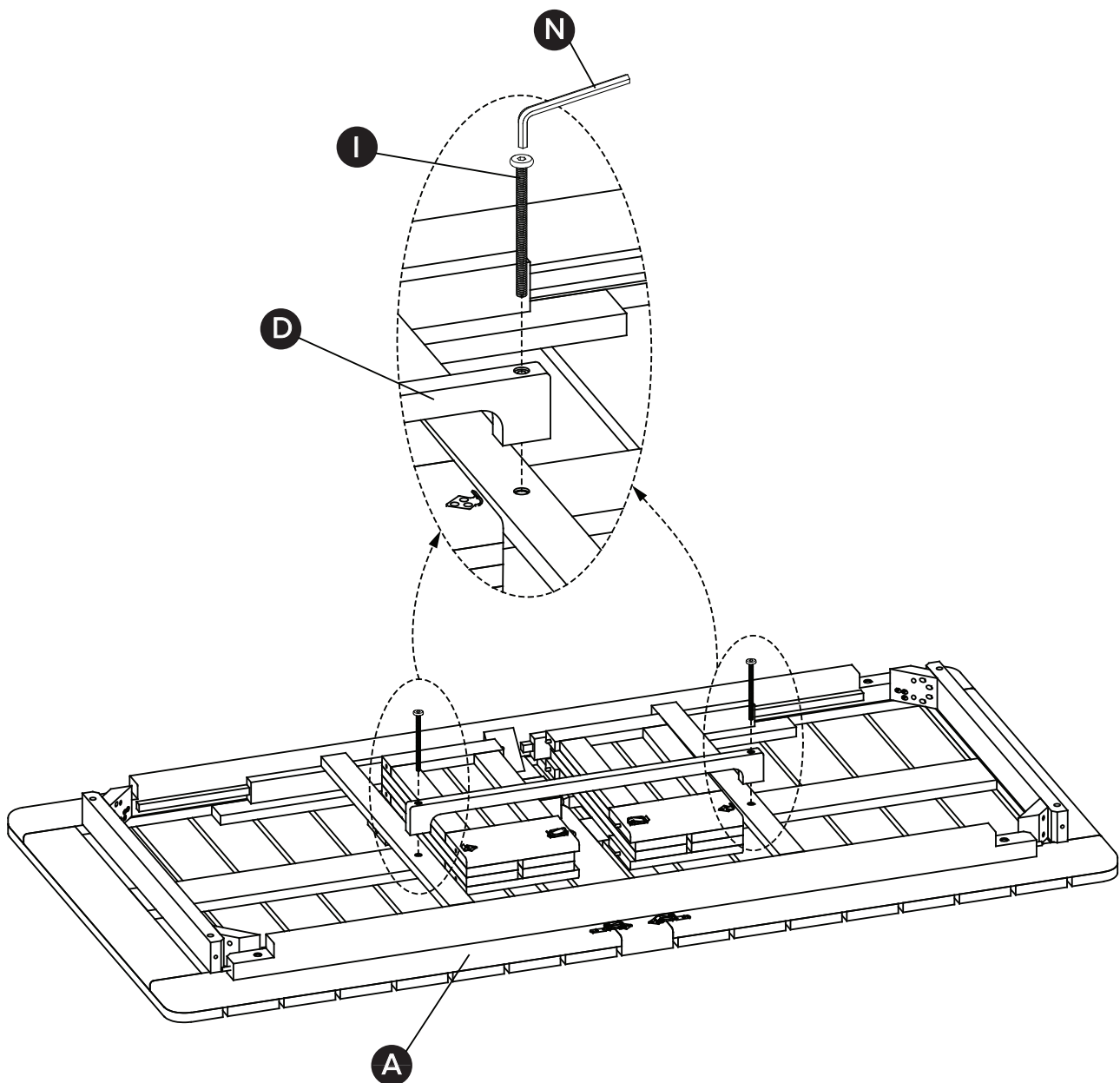
PARTS INVENTORY		
ID	DESCRIPTION	QTY
A	Table Top 	1
B	Table leg 	2
C	Table leg 	2
D	Table support 	1
E	Umbrella cap 	1

HARDWARE INVENTORY		
ID	DESCRIPTION	QTY
F	Bolt M8x80mm 	8
G	Bolt M8x50mm 	4
H	Bolt M6x90mm 	4
I	Bolt M6x70mm 	2
J	Flat washer Ø25x2mm 	8
K	Flat washer Ø20x2mm 	4
L	Warp washer Ø20x2mm 	12
M	Horizontal nut M6x20mm 	4

TOOLS INVENTORY		
ID	DESCRIPTION	QTY
O	Bolt M6x70mm 	1
N	Allen key M4x80mm 	1

1

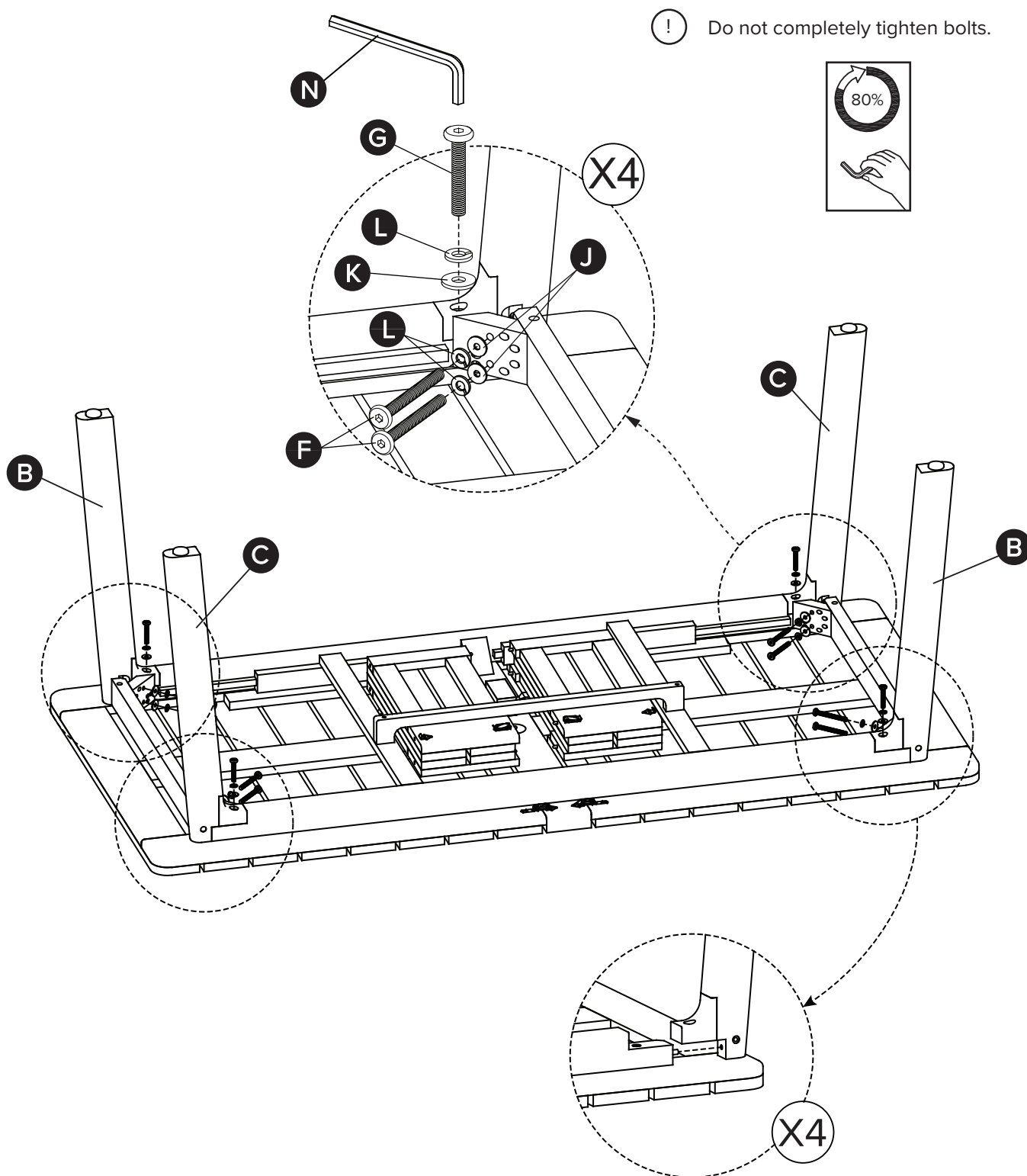
Place the table top (A) face down on an unpadded surface.
Insert the table support bar (I) into the position shown below, so that the bolts go through the pre-drilled holes in the table top, secure with a Allen key.



2

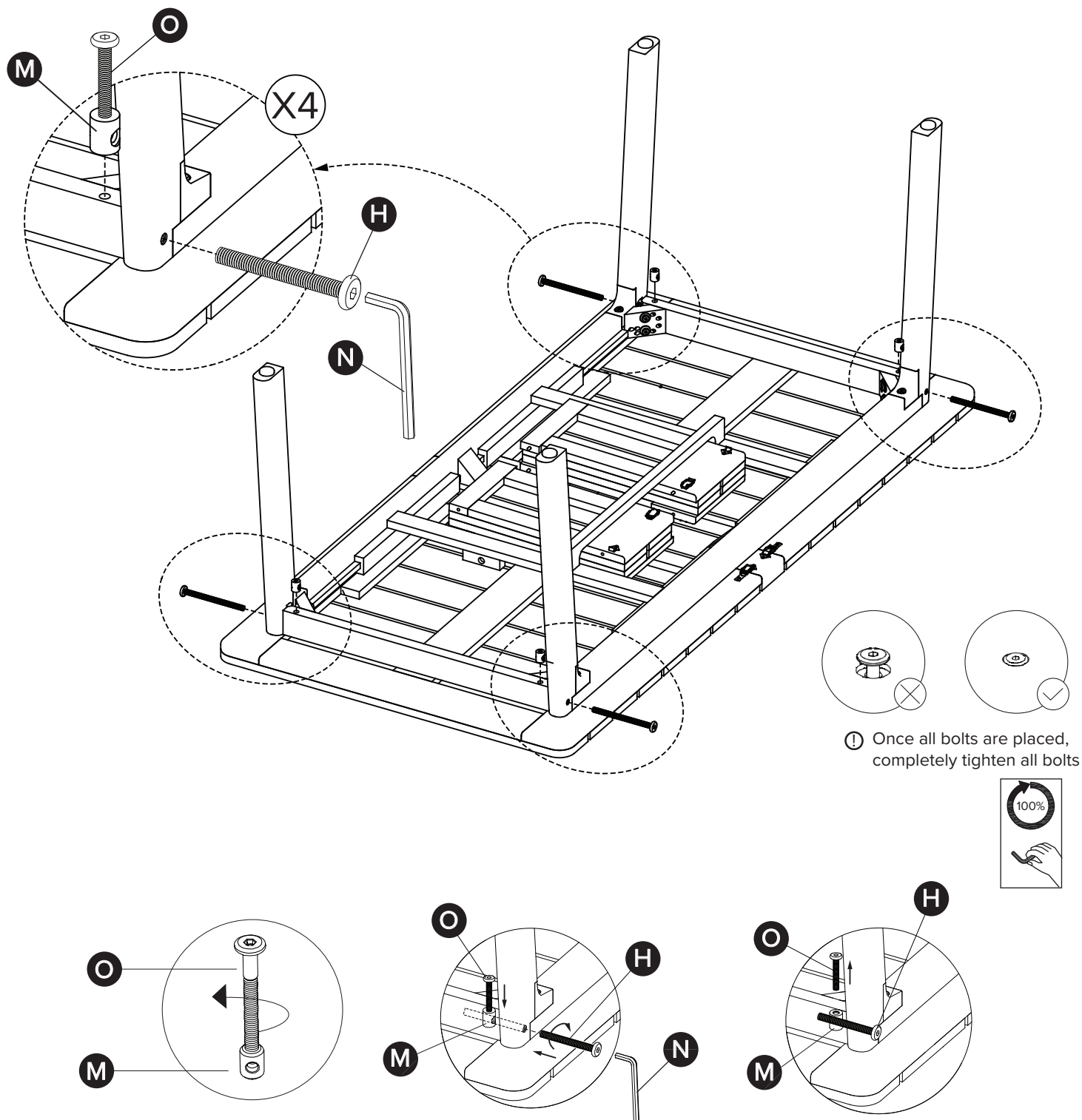
Insert the table legs into the four corners of the table so that the pre-drilled holes in the table legs and the table top are concentric with each other.

Fix the table legs with bolts (G), bolts (F), flat washers (K, J), warp washers (L) and allen key (N).



3

From step 2, attach the bolts (H) and the horizontal nut (O) and tighten it with the Allen key (N).



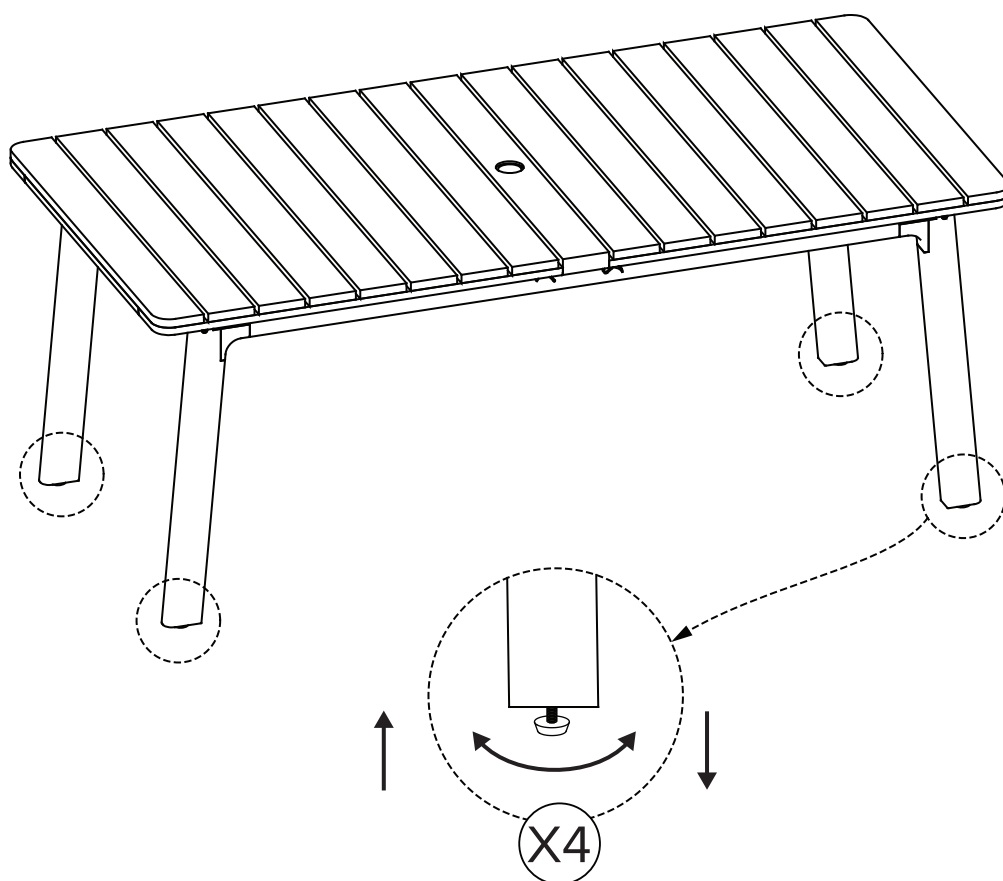
! Note: Use bolt (O) as a tool to insert temporarily and hold nut (M) to holes underneath the table, while connecting bolt (H) to nut (M).

Bulong (H) has to turn toward the right direction to connect with nut (M).

Remove bolt (O) after nut (M) is completely attached to bolts (H).

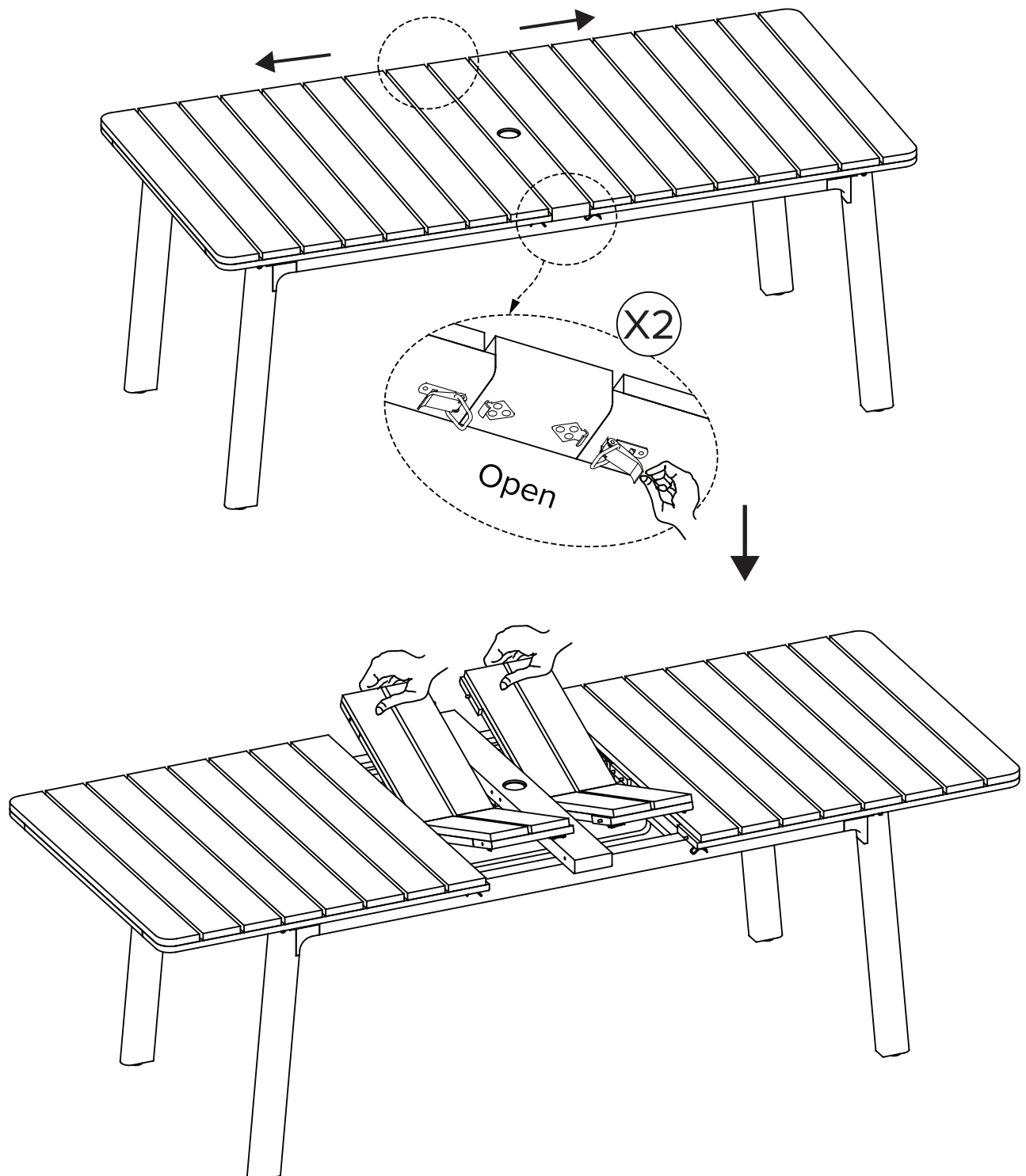
4

Turn the table upright and adjust the levelers at the bottom of the legs (if needed) to balance the table.



5

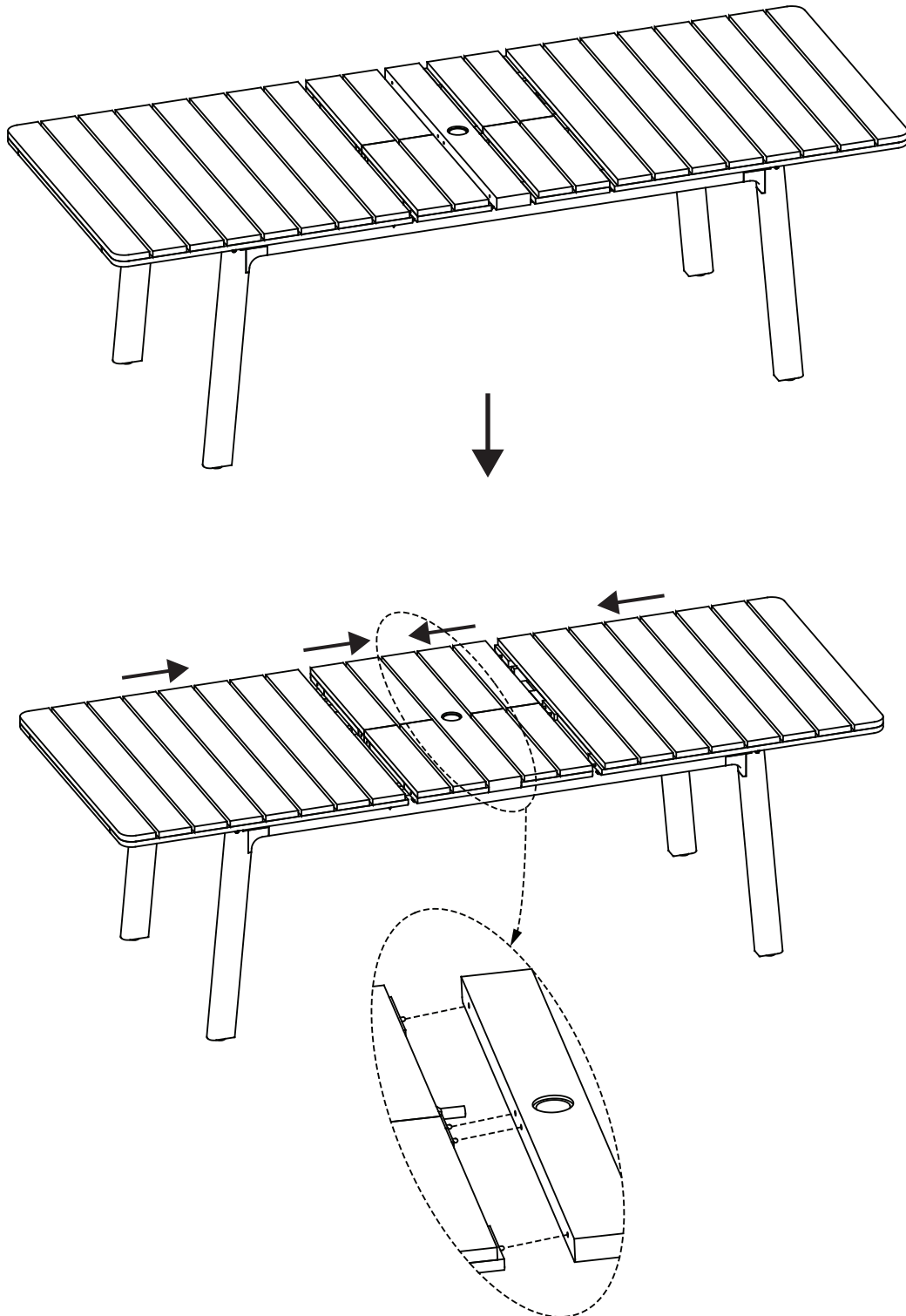
Open the duckbill locks under the table top, then pull the 2 table tops out, and flip the 2 side table tops up and install them correctly in the locating pins.



6

Step 1: Move the middle table top assembly into the position.

Step 2: Move the 2 outer table tops into the correct position.



7

Close the duckbill lock to secure the table tops.
Put on the umbrella cap (E) if you do not pair the table with an umbrella.

