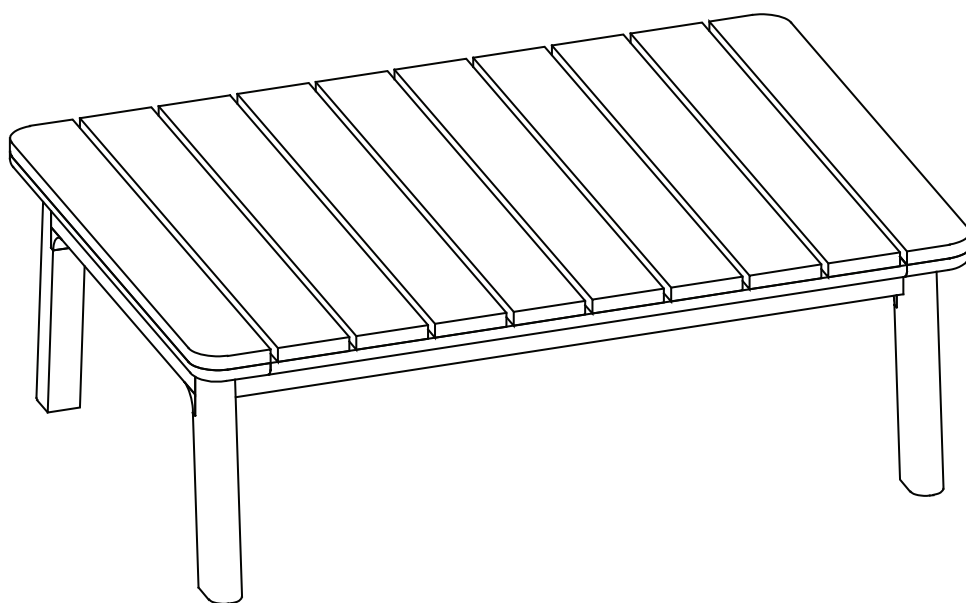


# ARTICLE.

VERSION 1.1

## Assembly Instructions



# Elise

Outdoor Coffee Table



ASSEMBLY INSTRUCTIONS

Read these instructions carefully and keep for future reference. Refer to parts inventory for guidance, and ensure you have all pieces before starting.

When assembling, place all parts on a soft, clean, and flat surface such as a carpet to prevent scratches.




If you're having difficulty, our friendly Customer Care team is always here to help. Call us at 1.888.746.3455 during business hours, email [service@article.com](mailto:service@article.com) or chat live at [article.com](https://article.com).



PARTS INVENTORY		
ID	DESCRIPTION	QTY
A	Table Top 	1
B	Table leg 	2

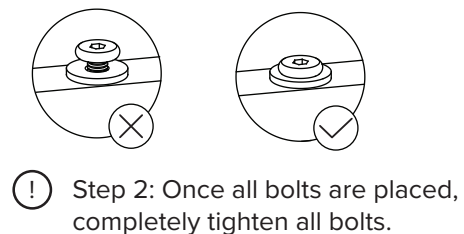
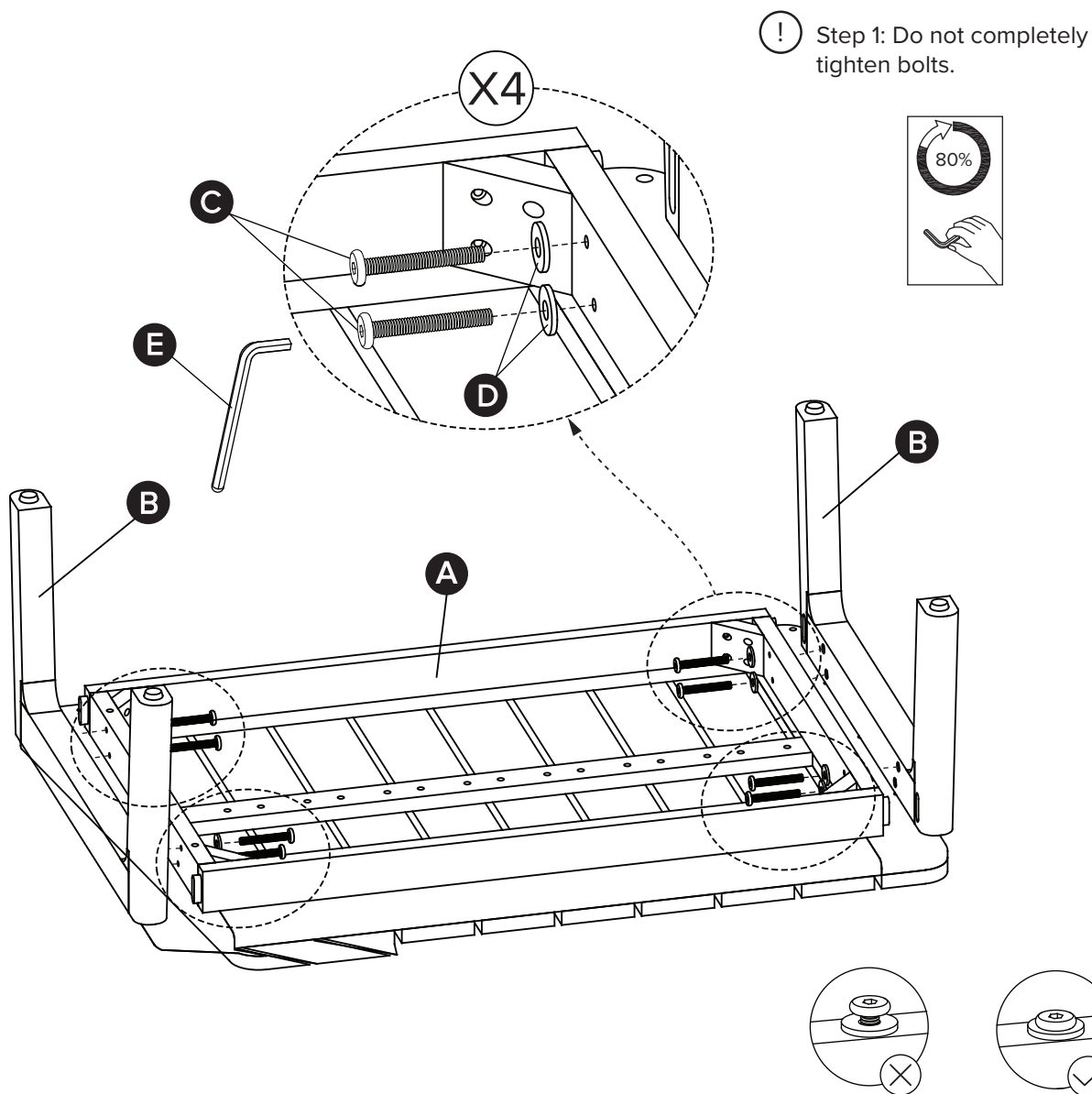
!

Hardware may loosen over time , check the bolts regularly and tighten if necessary .

HARDWARE INVENTORY		
ID	DESCRIPTION	QTY
C	Bolt M6X45mm 	8
D	Washer Ø18X2mm 	8
E	Allen key M4x80mm 	1

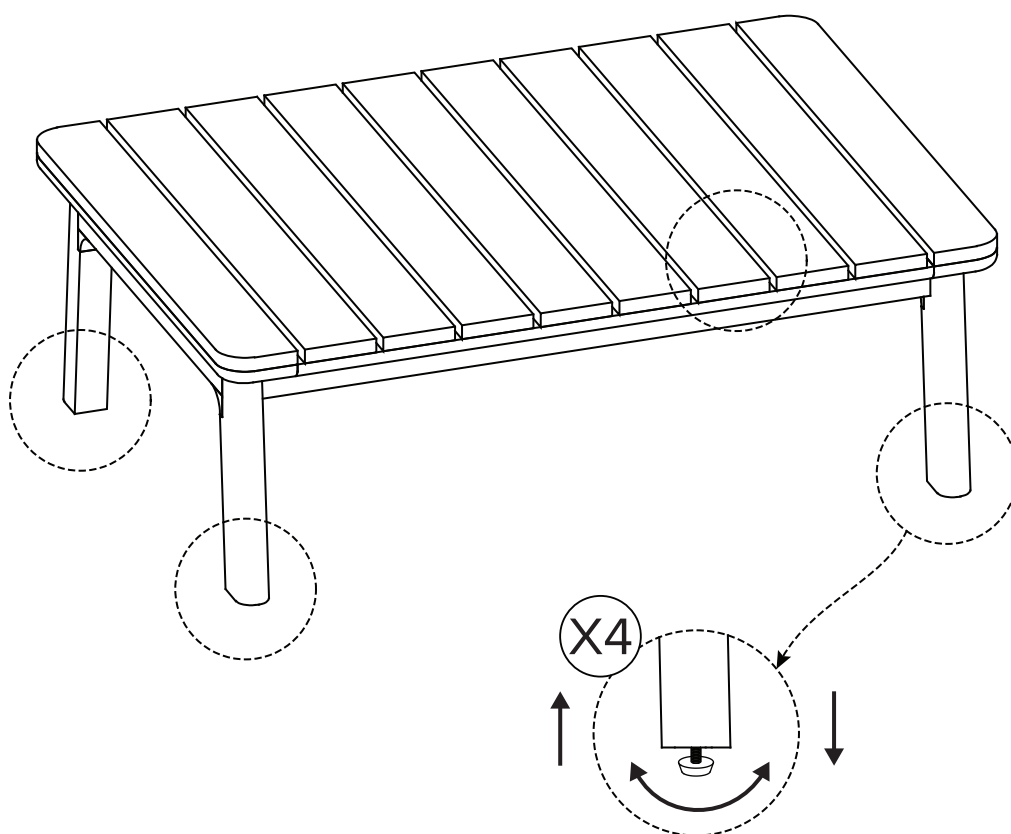
1

Place Table top (A) upside down on a padded non-marry surface.  
Insert Table leg (B) so that the Bolts go through pre-drilled holes at Table top corner. Secure with Washer (D) and Bolts (C) by using the Allen key (E).



2

Turn the table upright and adjust the levelers at the bottom of the legs (if needed) to balance the Coffee table.



3

---

Your Coffee table is ready to be used.

